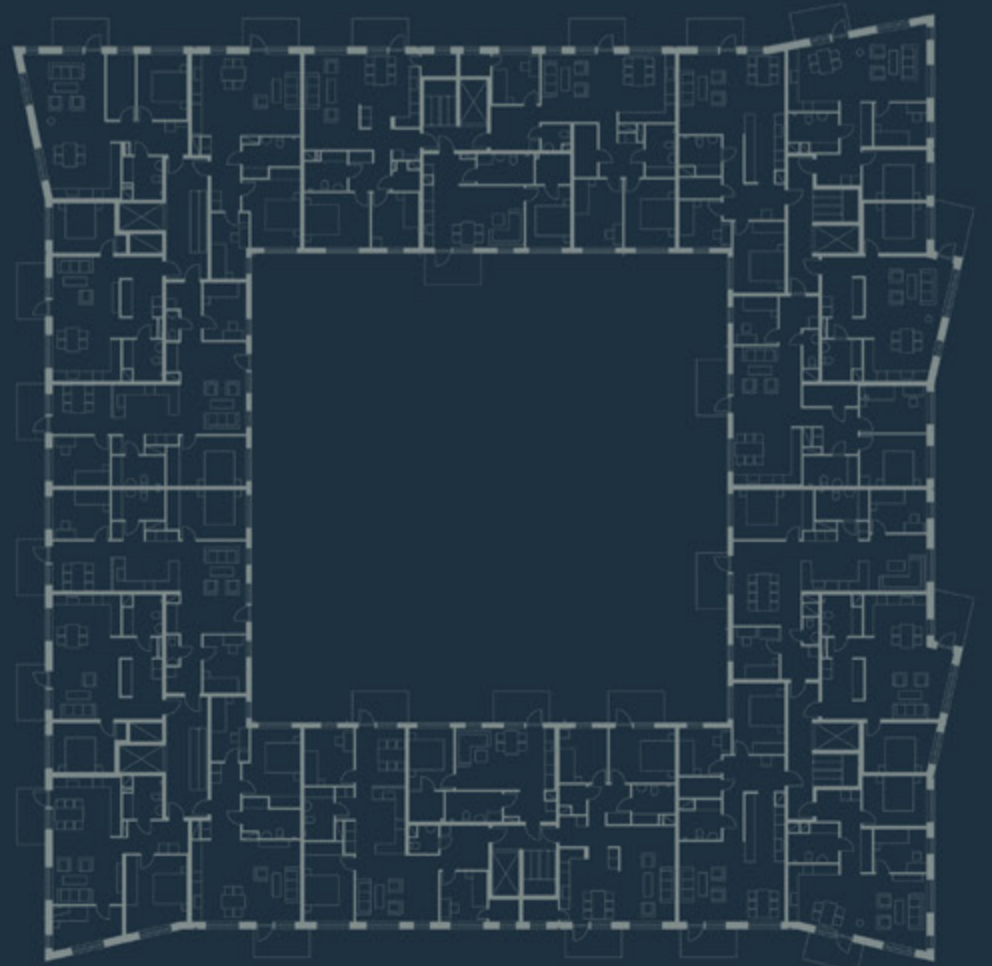
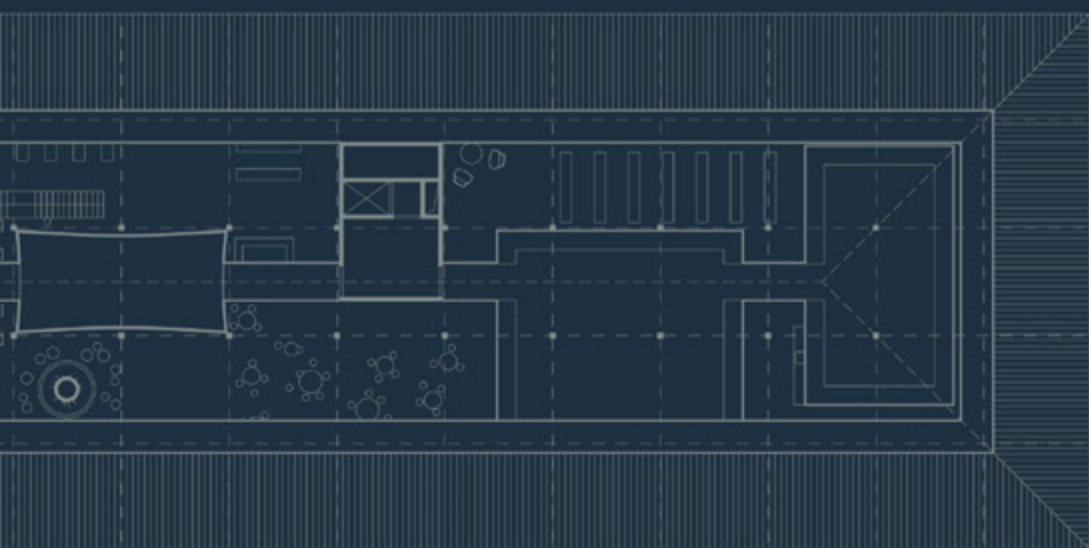


Kjellander Sjöberg

Floor Plans



Kjellander Sjöberg: Floor Plans

Catalogue by Stefan Sjöberg, Robert Magnusson Årebo, Andrea Sclafani and Cecilia Tarandi

Graphic material

Kjellander Sjöberg

Published by Kjellander Sjöberg, 2021

Kjellander Sjöberg was founded in 1998 and is a medium-sized architectural practice with a diverse and dedicated international team led by three partners:

Mi Inkinen, Ola Kjellander and Stefan Sjöberg.

KS operates from Stockholm, Malmö and London, vibrant cities where we are a part of ongoing transformations to improve and create new liveable places. We work on every scale to support people's daily life and generate rich, green urban experiences.

We are driven by developing sustainable projects that meet the challenges of climate change and make meaningful use of resources; that tell a story of life, content, interaction, local neighbourhoods and society. We base all our work on a collaborative approach and dialogue, to create urban areas, buildings and landscapes that actively contribute to shaping a better future.

kjellandersjoberg.se
press@kjellandersjoberg.se

ISBN 978-91-519-1004-8

FLOOR PLANS

A set of dreams and realities.

The exhibition Floor Plans in KS Malmö Shop by Kjellander Sjöberg, is a collection of 30 floor plans from different places, points in time and processes that we've been fortunate to visit and participate in over the past few decades.

Floor plans are ways for us to dream of sustainable futures, of healthy built environments, flourishing communities and opportunities – while at the same time creating and constructing pragmatic proposals for a quality everyday life, for everyone.

One room at the time...

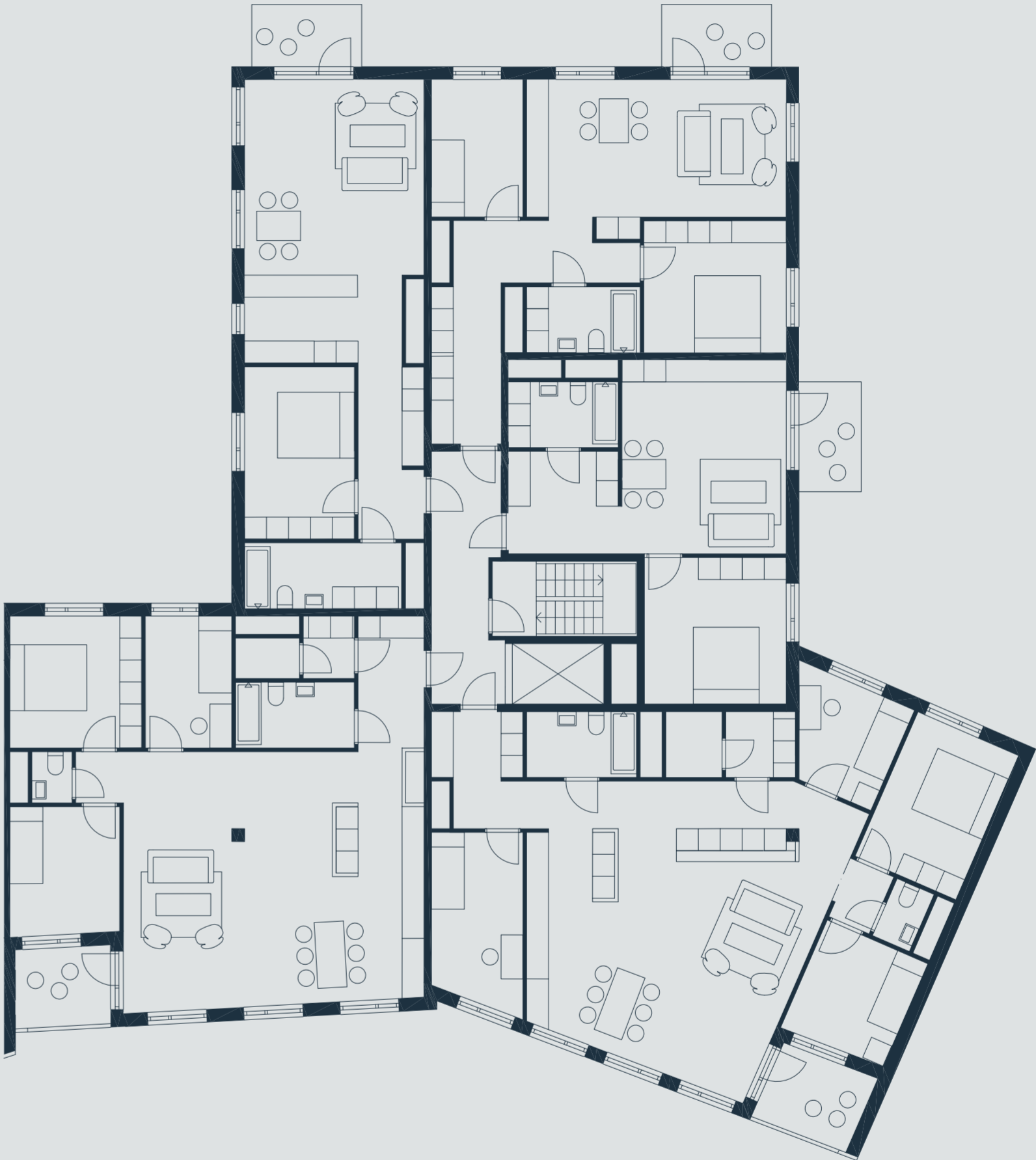
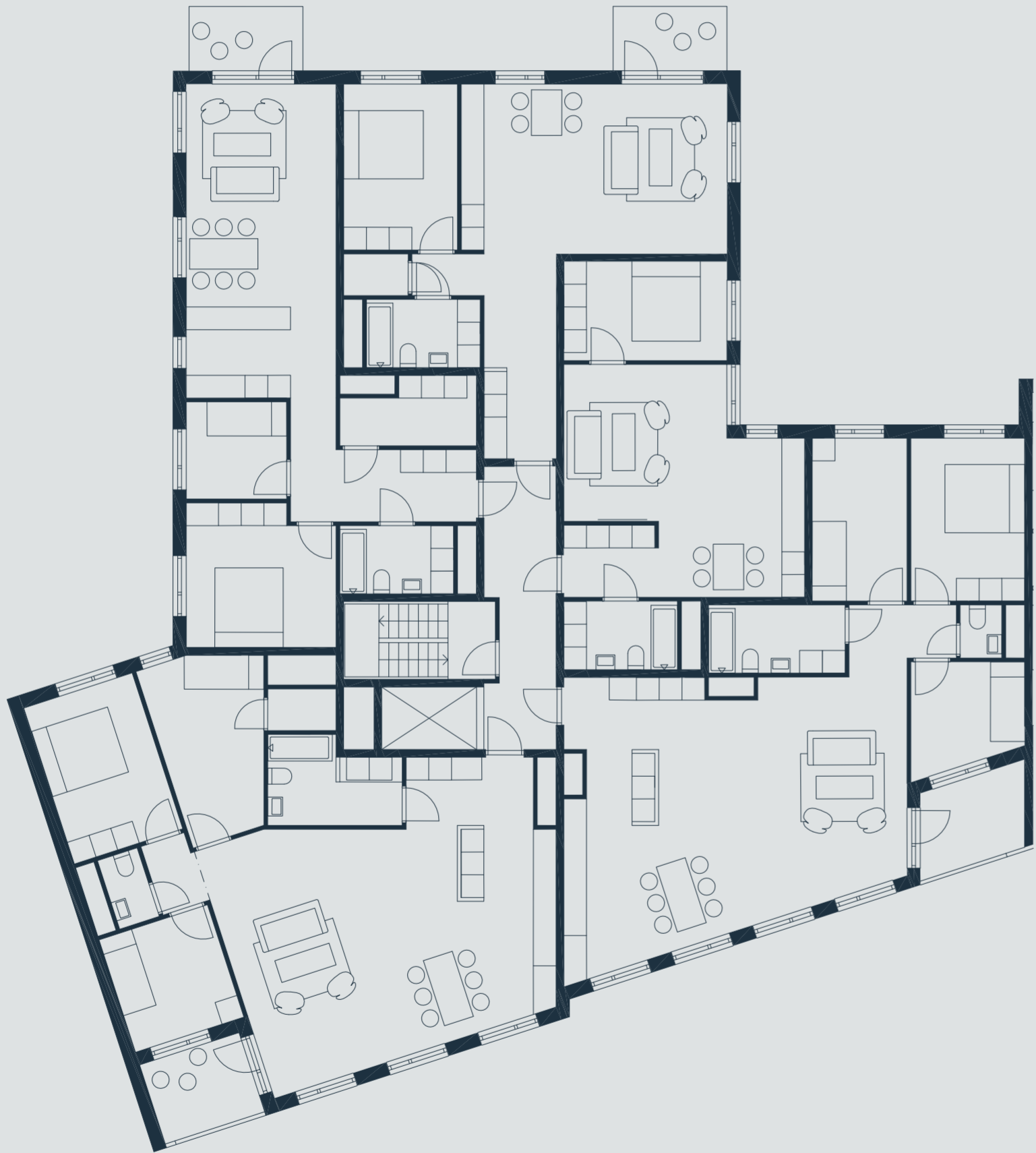
When designing buildings, urban blocks and even masterplans, we don't have one uniformed way to go about "solving" them. To a certain degree they need to do the job; they need to function and make rational and efficient use of precious and expensive-to-build square meters of space. They need to make sense, and be based on sound and balanced decision-making. They should be user-friendly, providing clear orientation and way-finding, meeting codes and regulations, be accessible with good daylight.

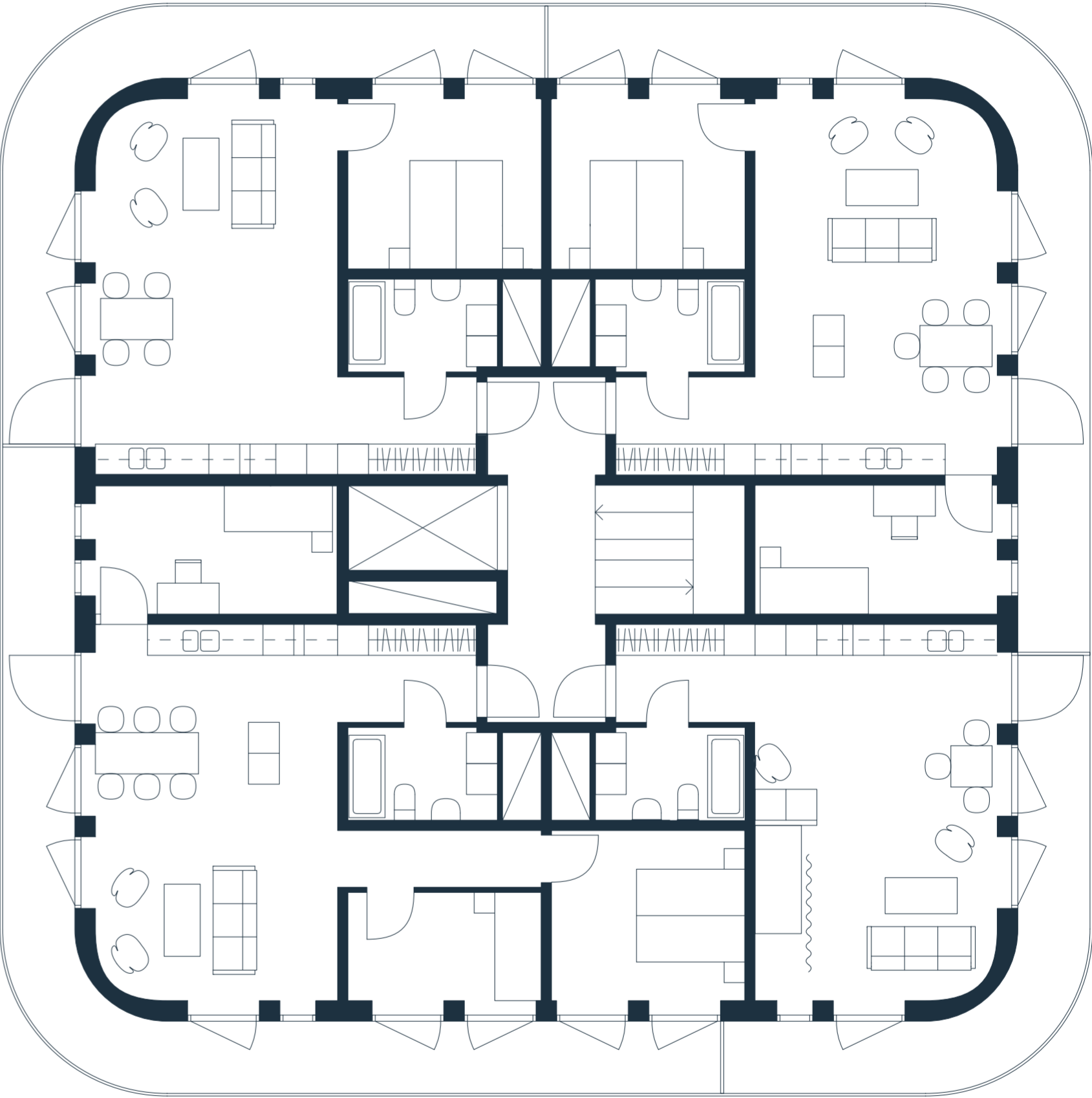
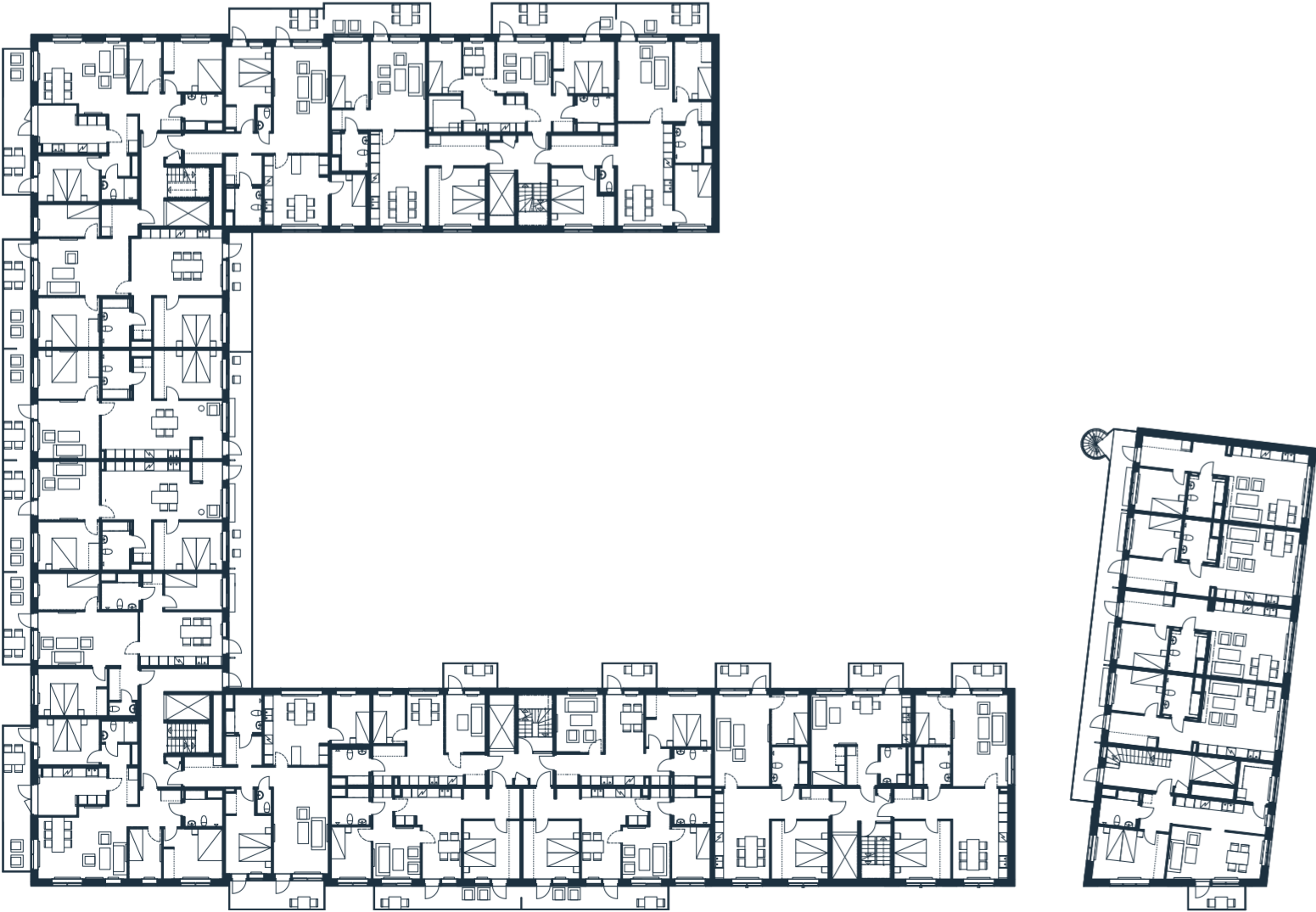
We approach crafting good floor plans through a series of questions and queries, based in a shared set of values:

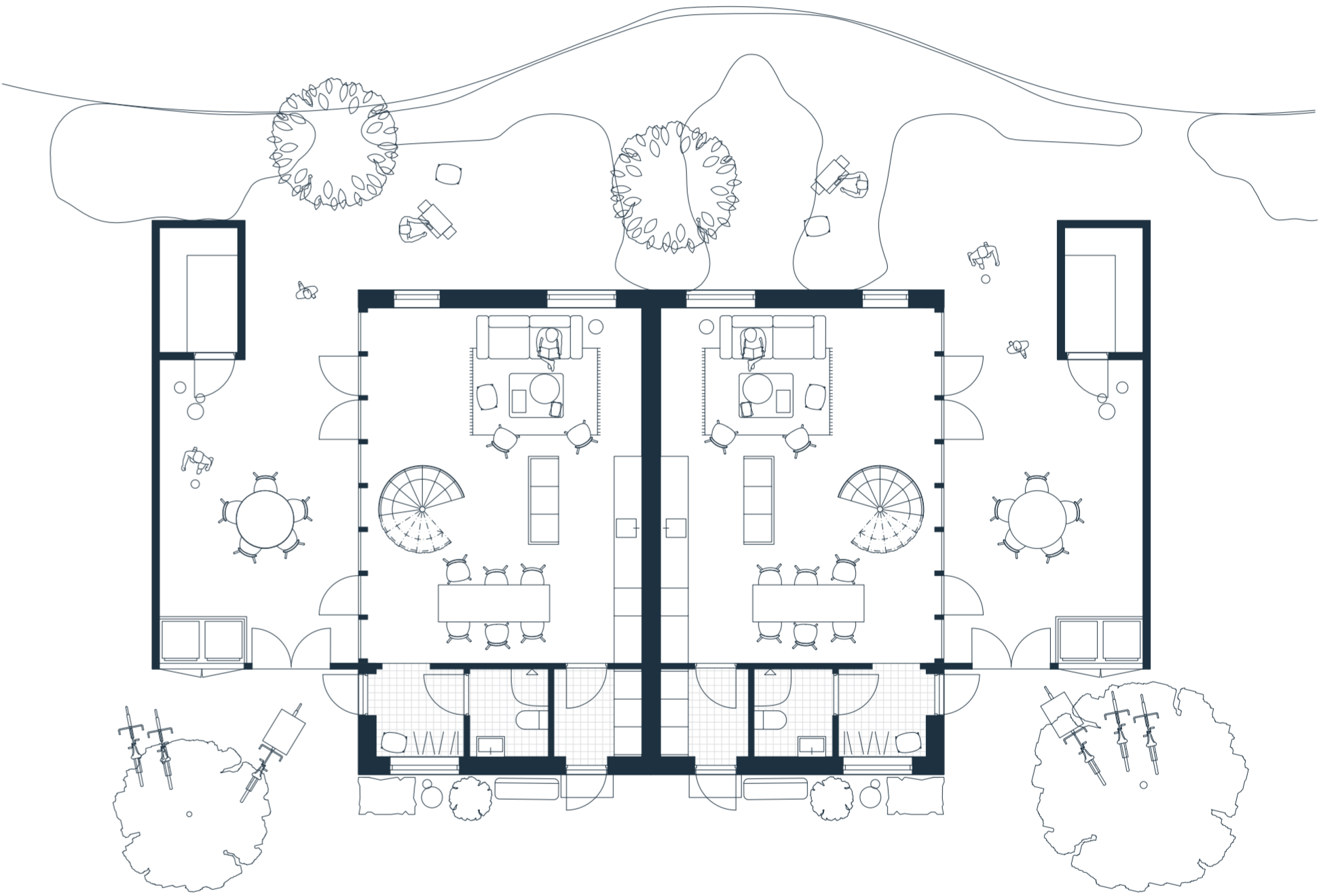
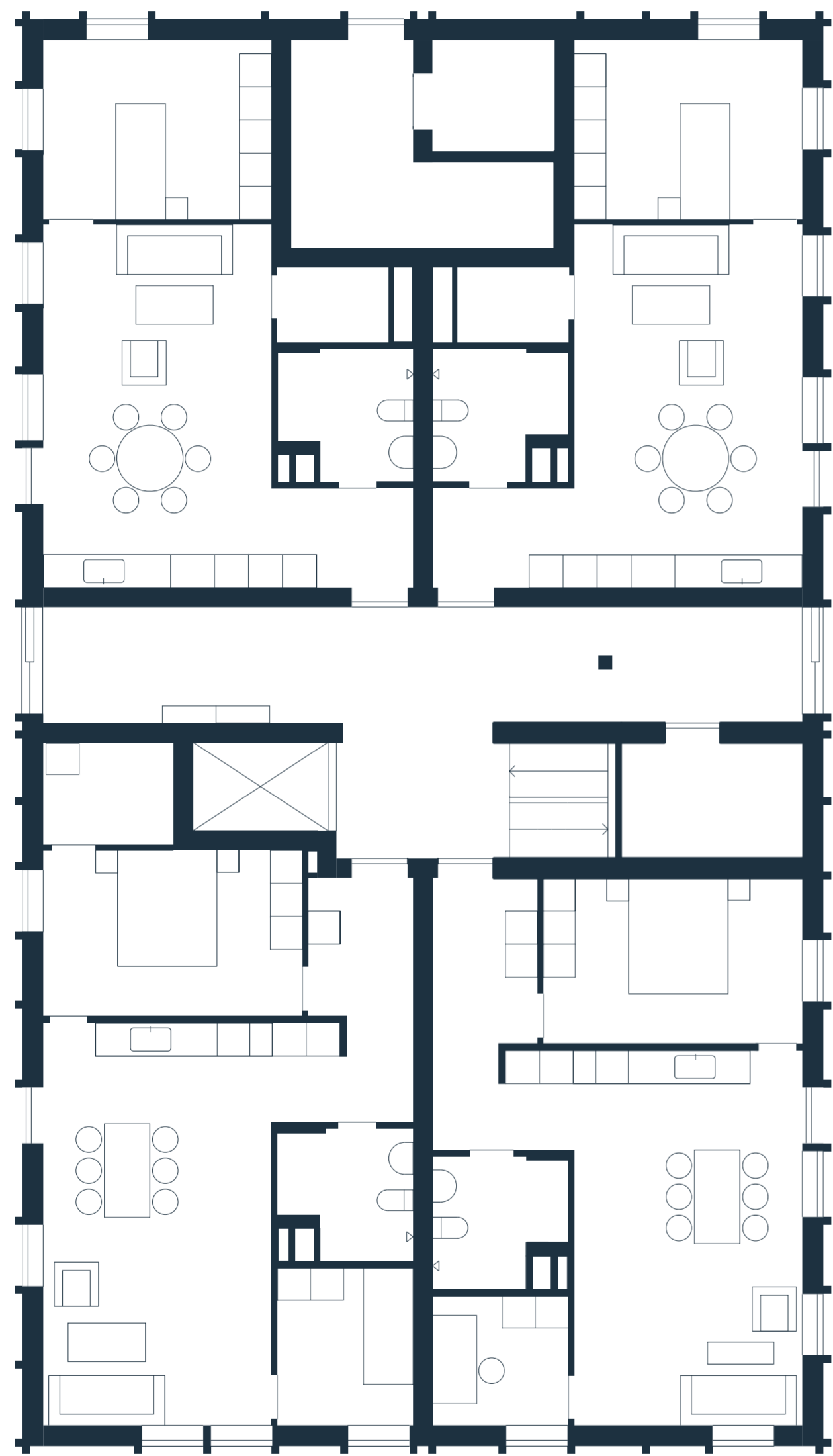
Will this layout generate flexibility for varying uses over time? What other combinations of spaces can we envision? How do the interior spaces meet the public realm? Is the layout anchored in the urban context, into the site and the surrounding landscape? Have we addressed preserving bio-diversity and species? Have we limited the use of natural resources? How can we integrate meeting places, promote activities and social encounters? Participation and inclusion? Can the structure of the building be bespoke and analog with the spatial layout?

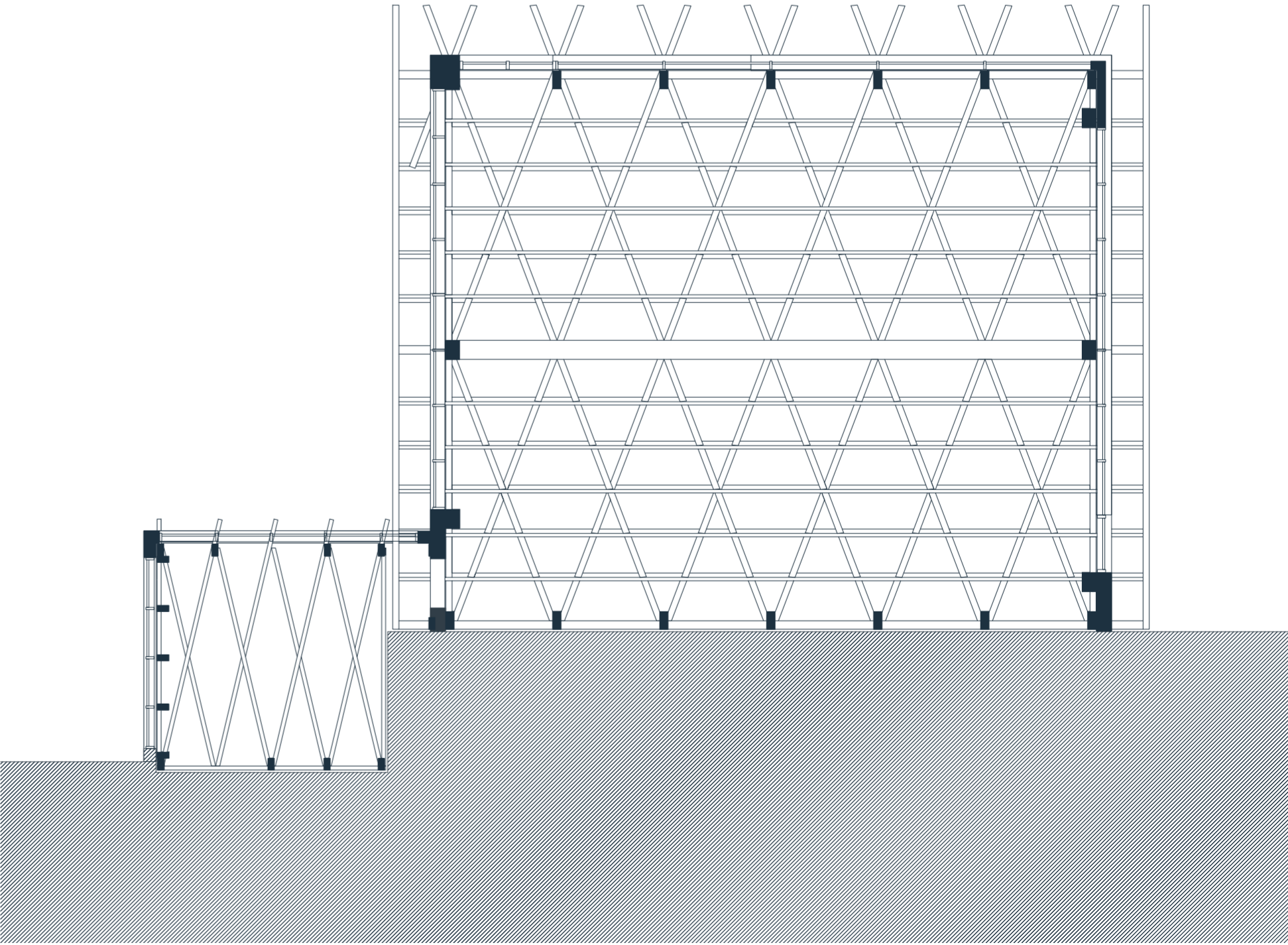
How can we shape and promote sustainable patterns and behavior? How can we create a quality every-day experience, with delight and well-being? Have we created spaces that are inspirational, meaningful and tells a story?

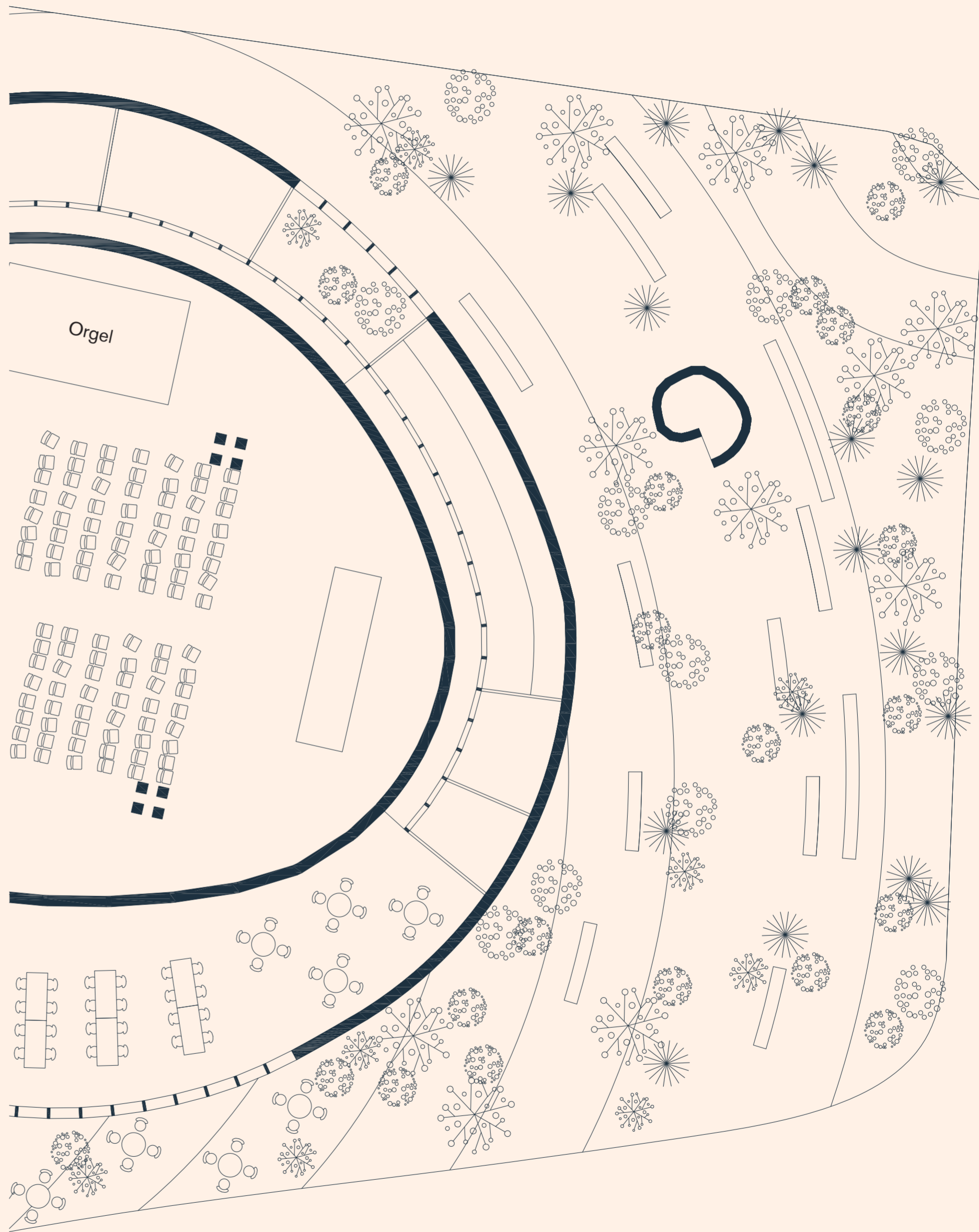
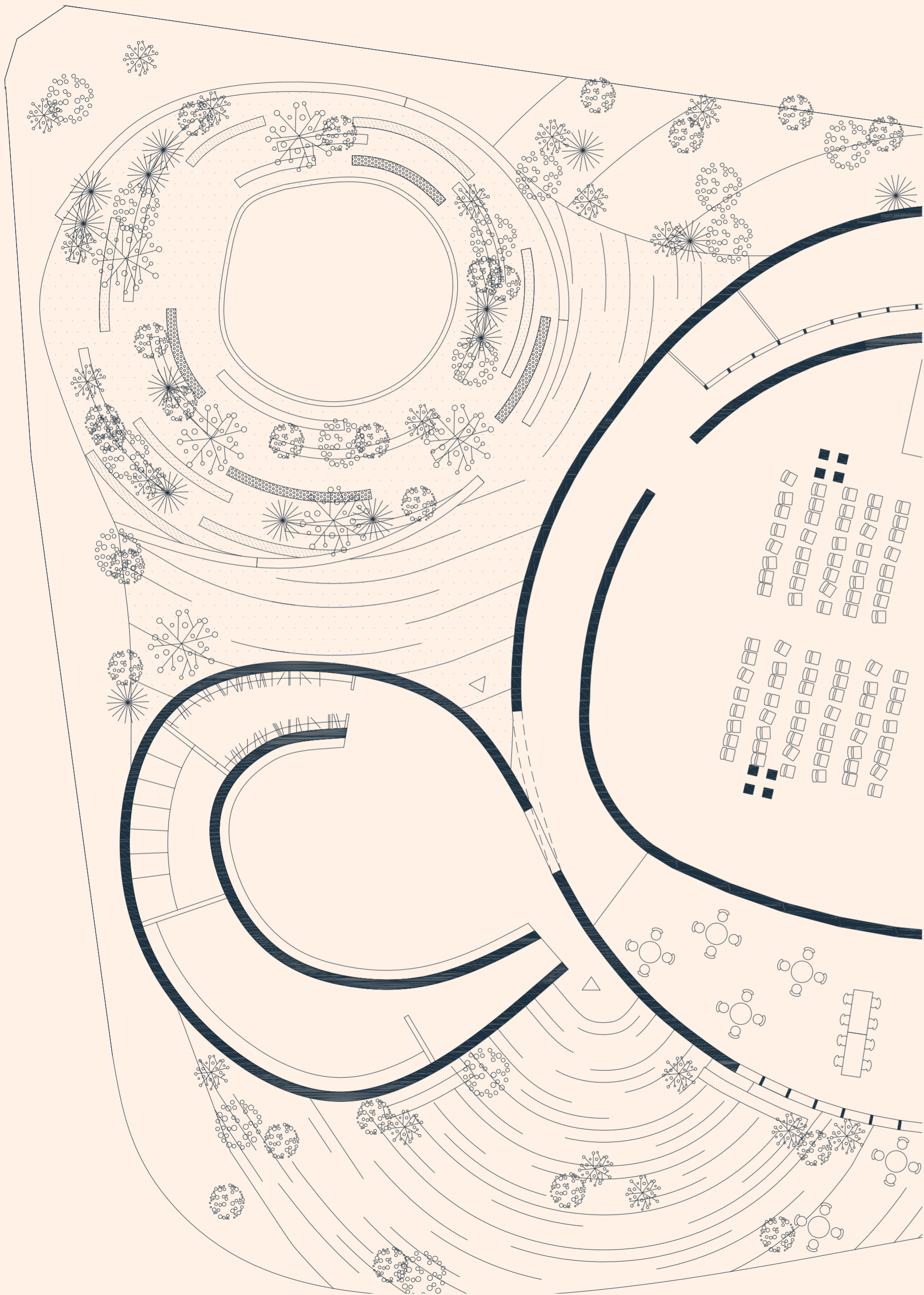
Stefan Sjöberg
Kjellander Sjöberg
Stockholm, June 2021

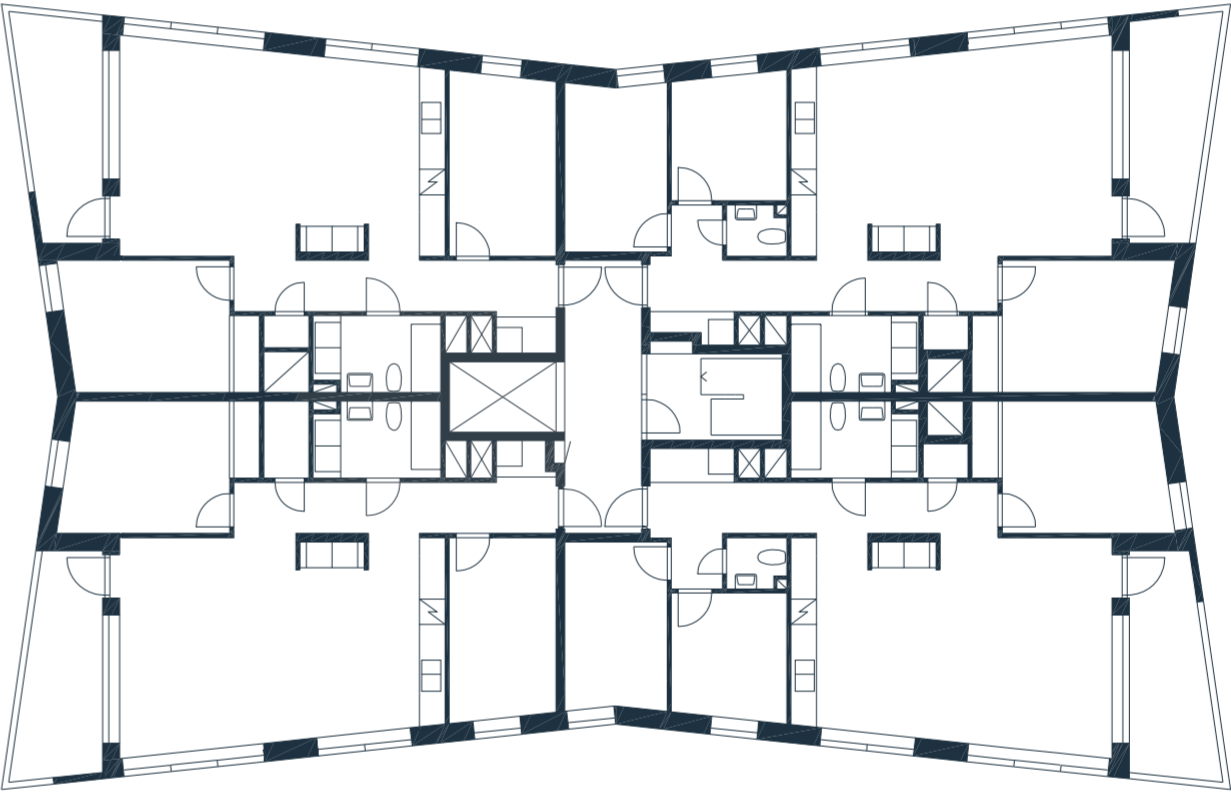
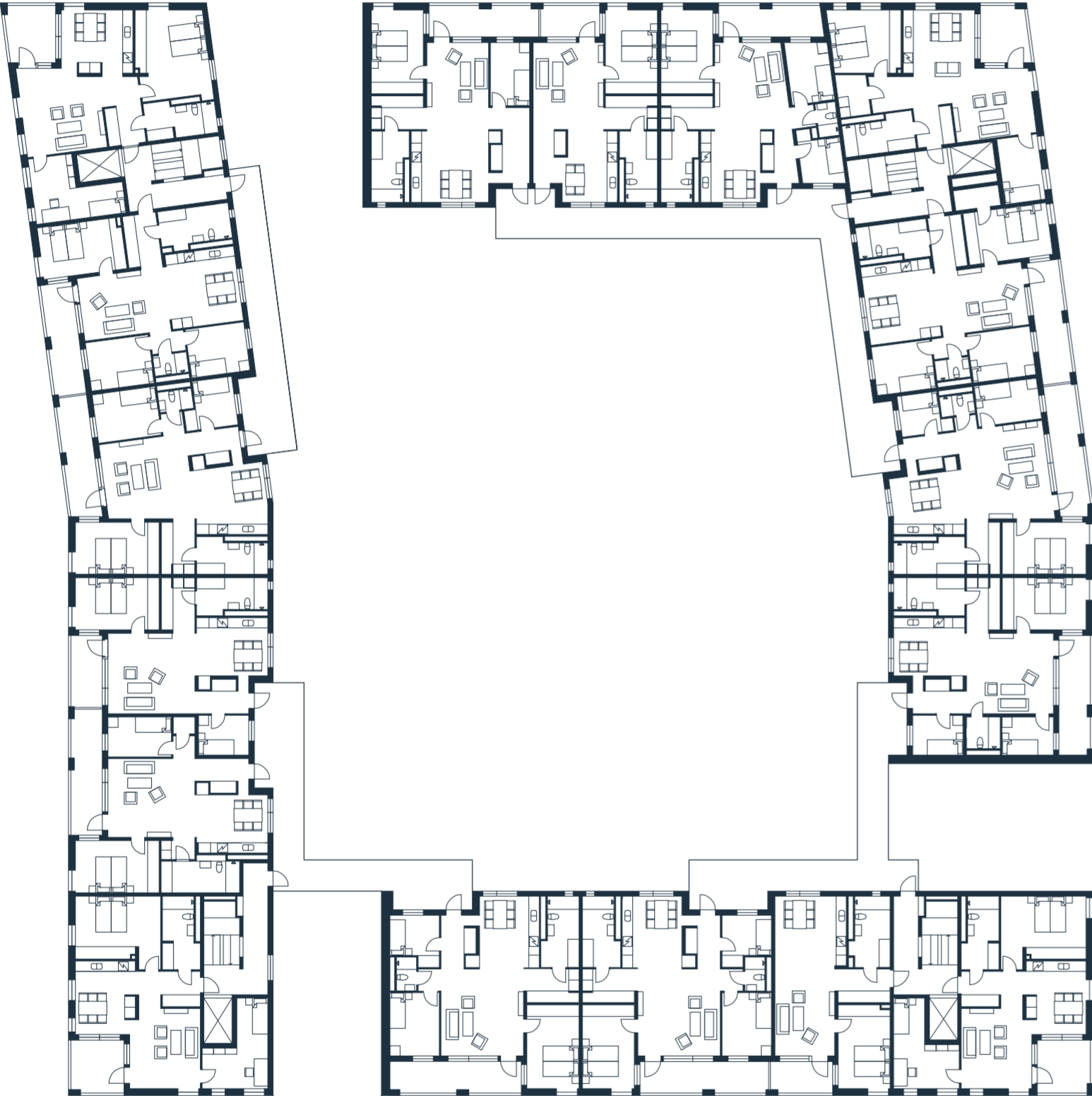


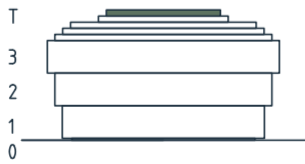
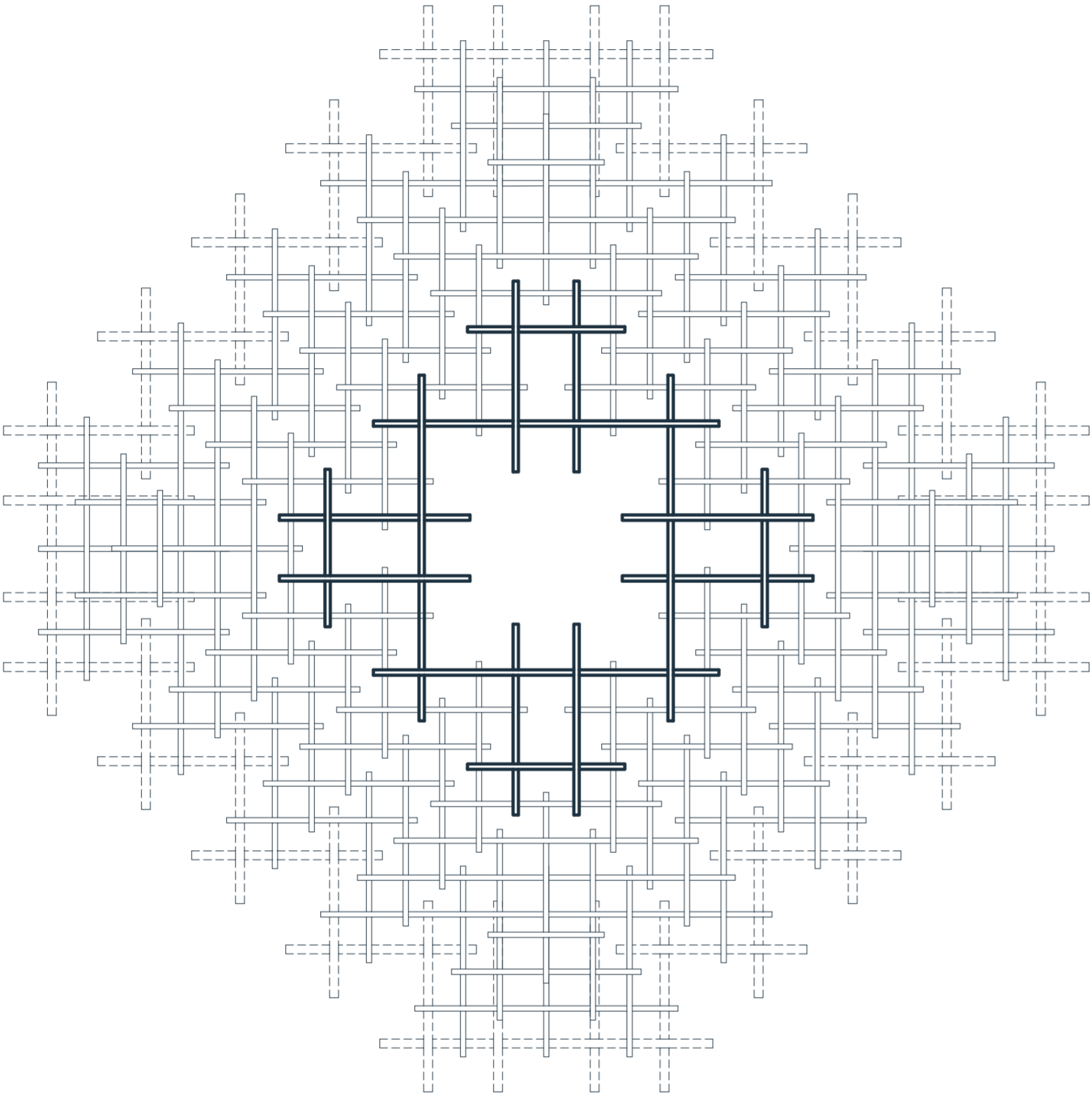


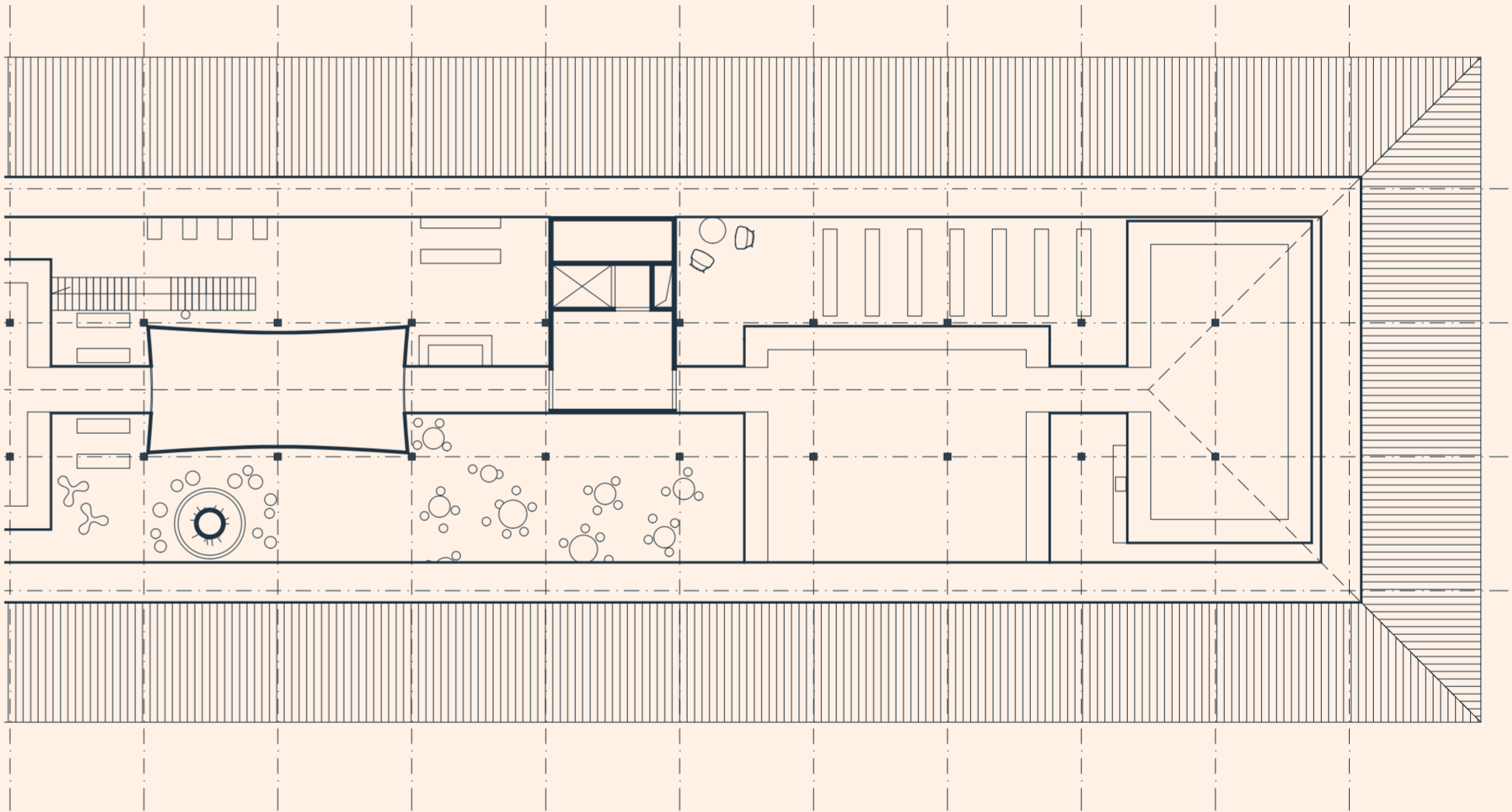
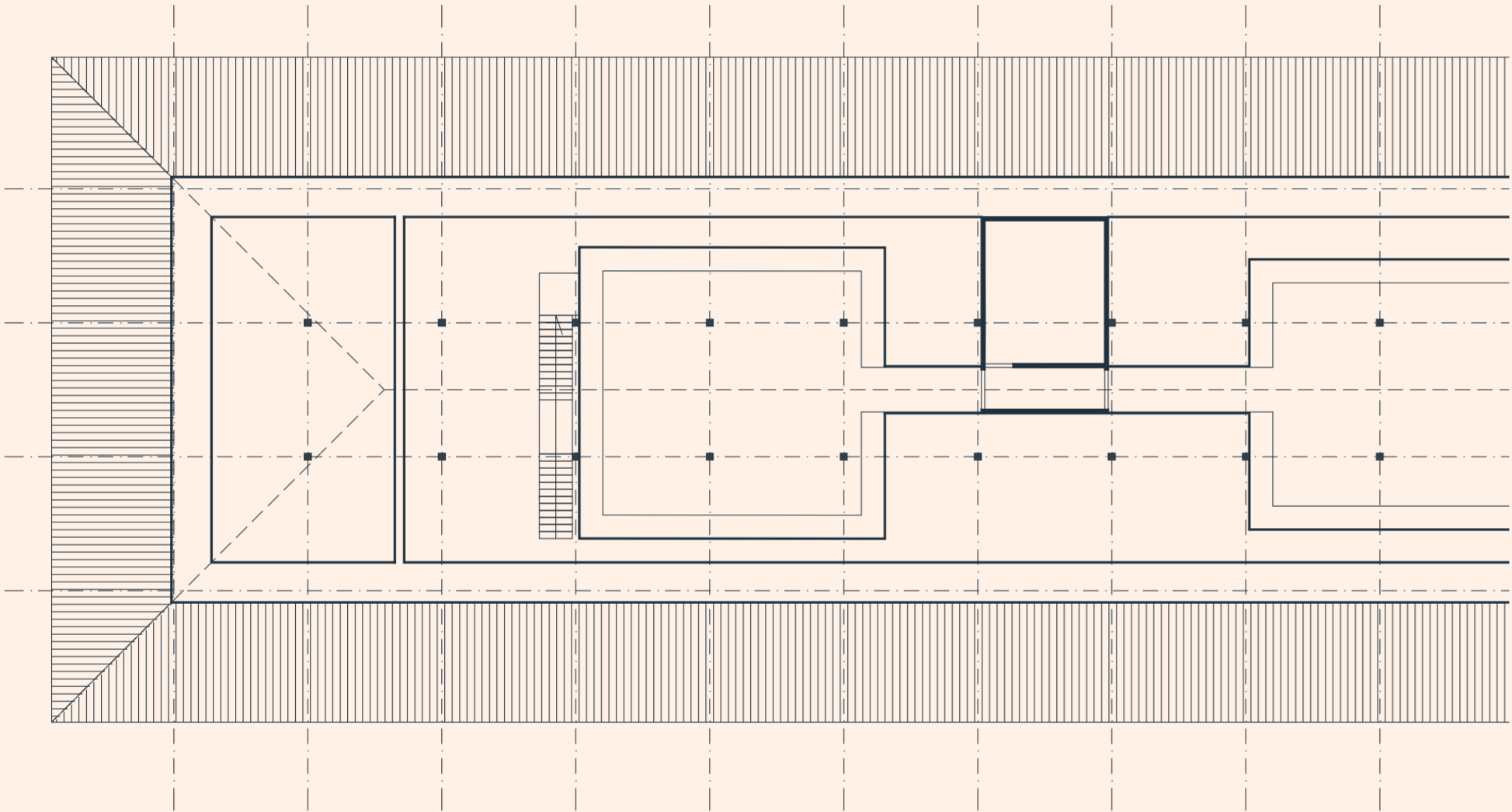


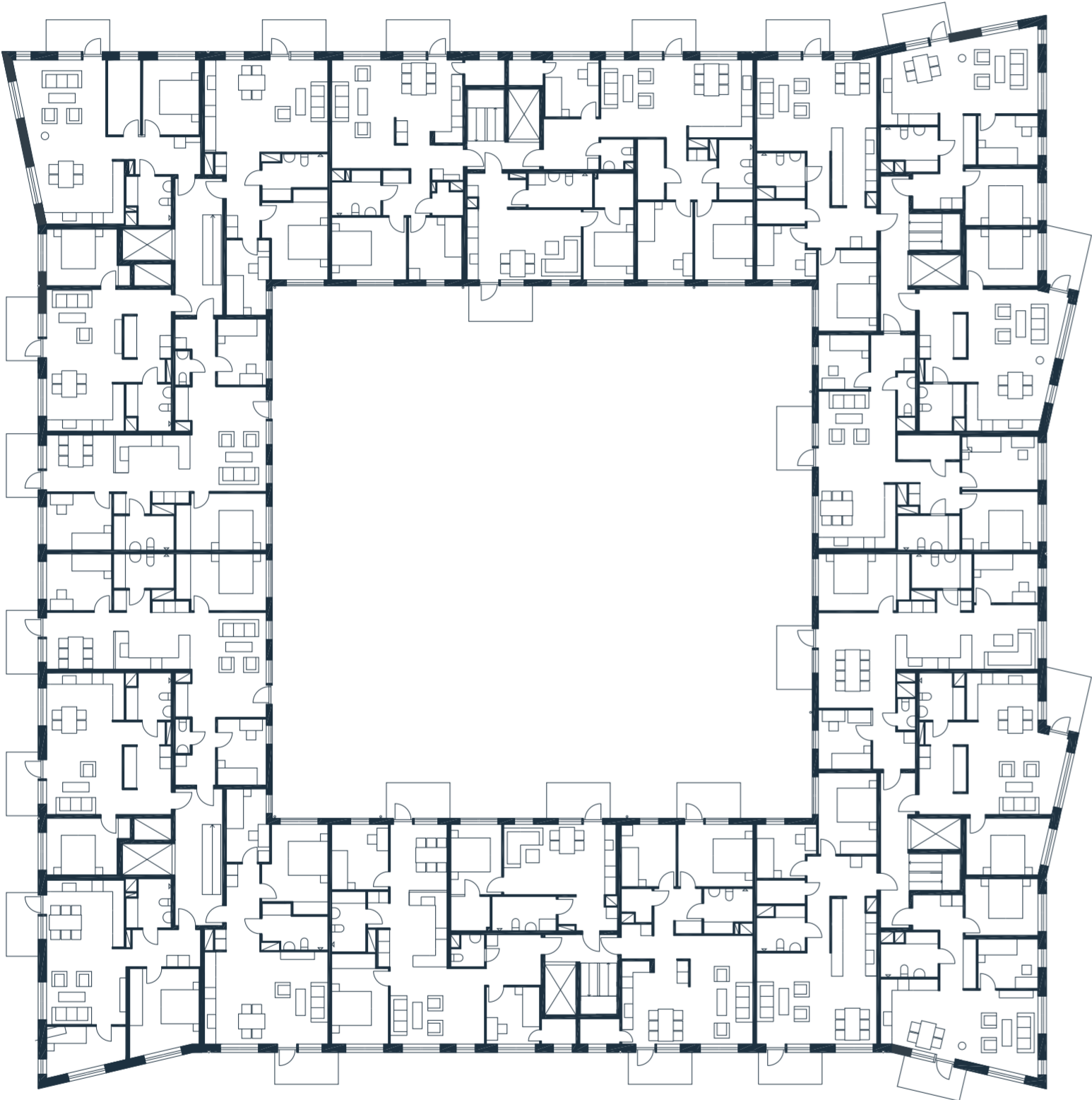


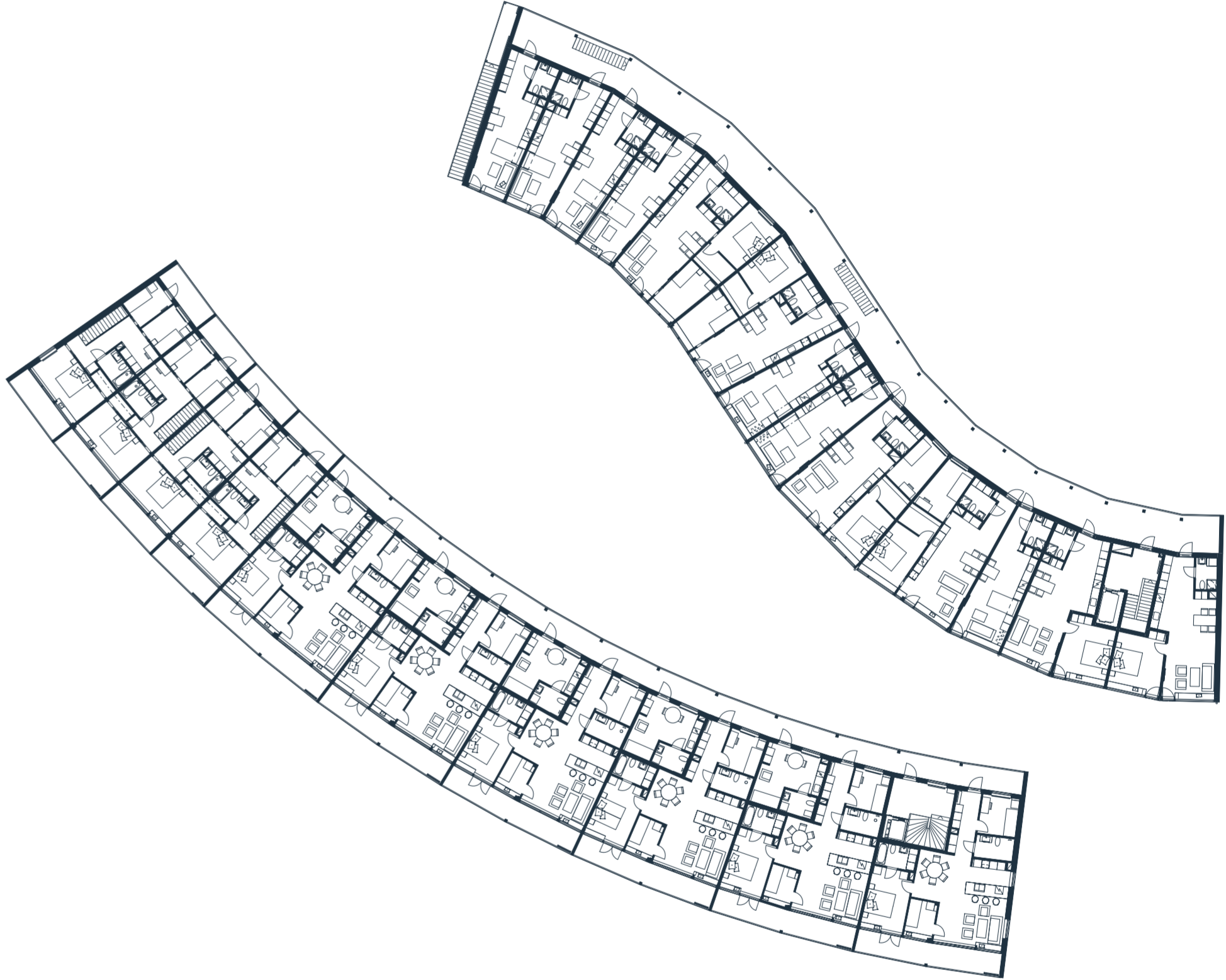
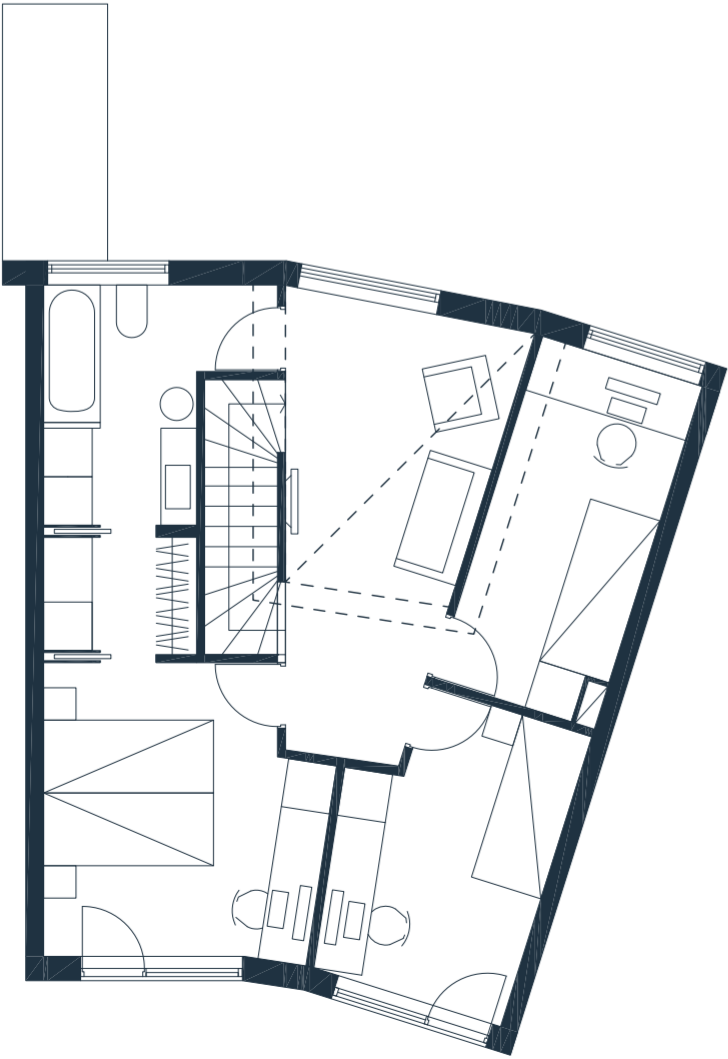


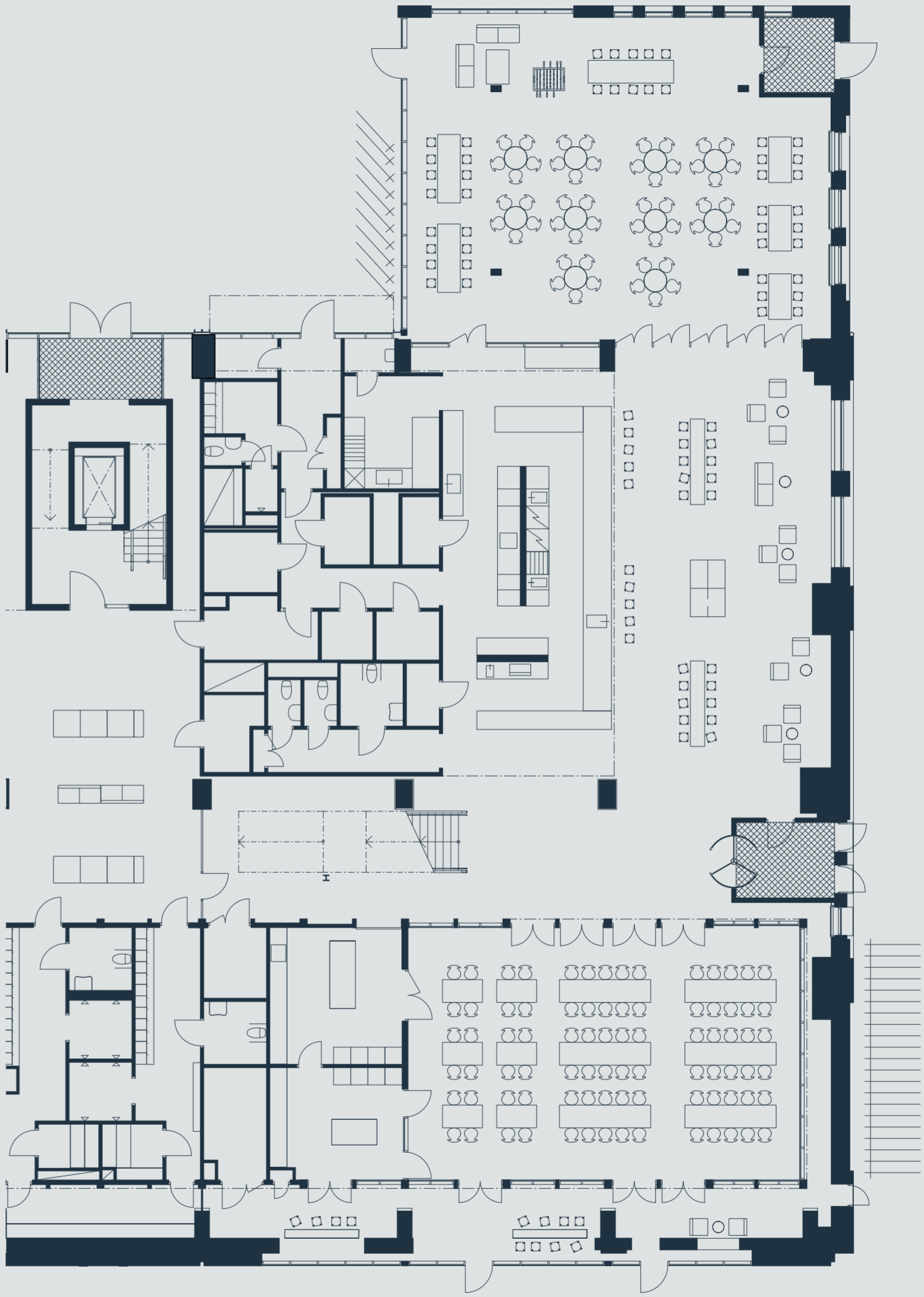


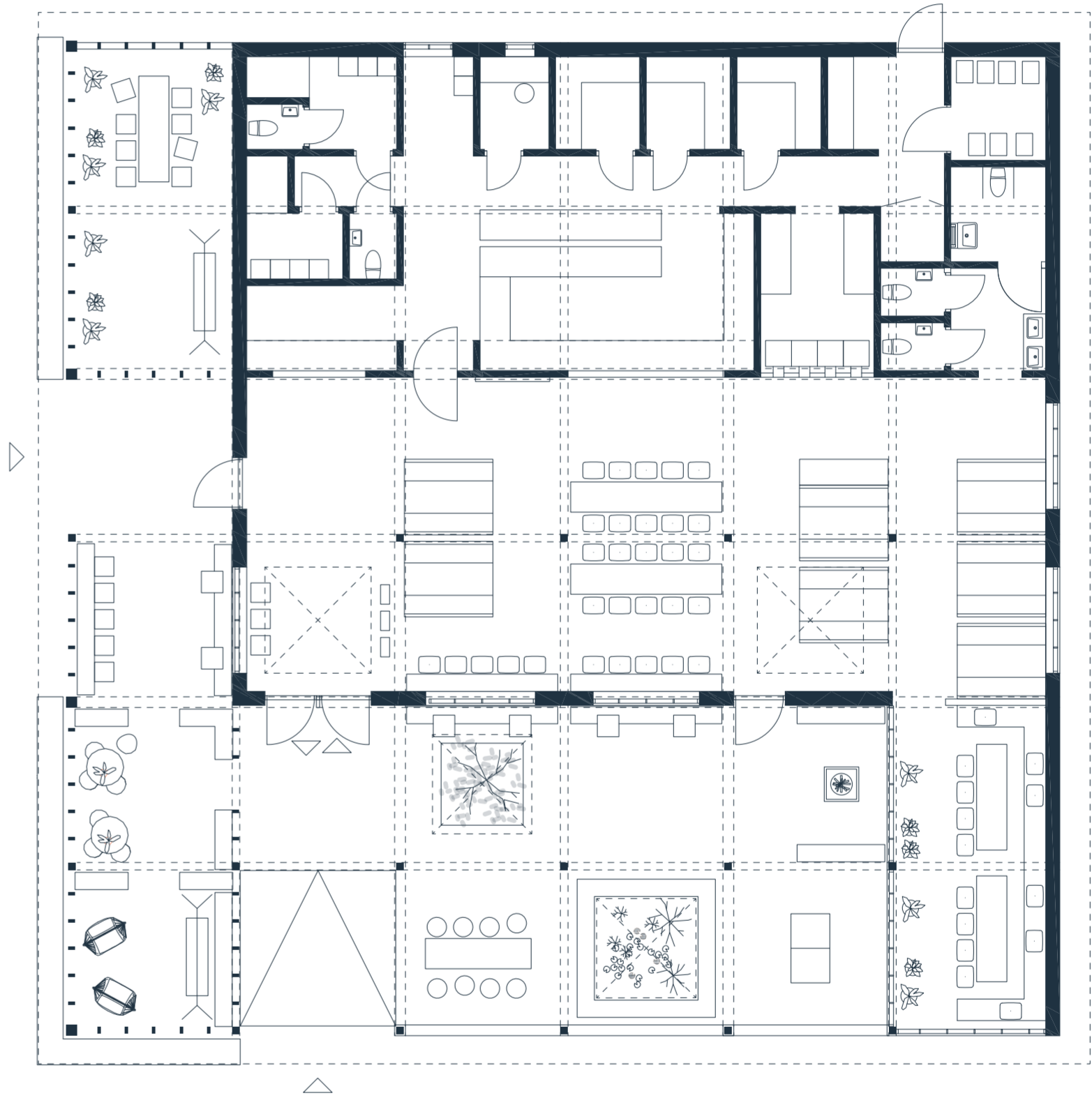
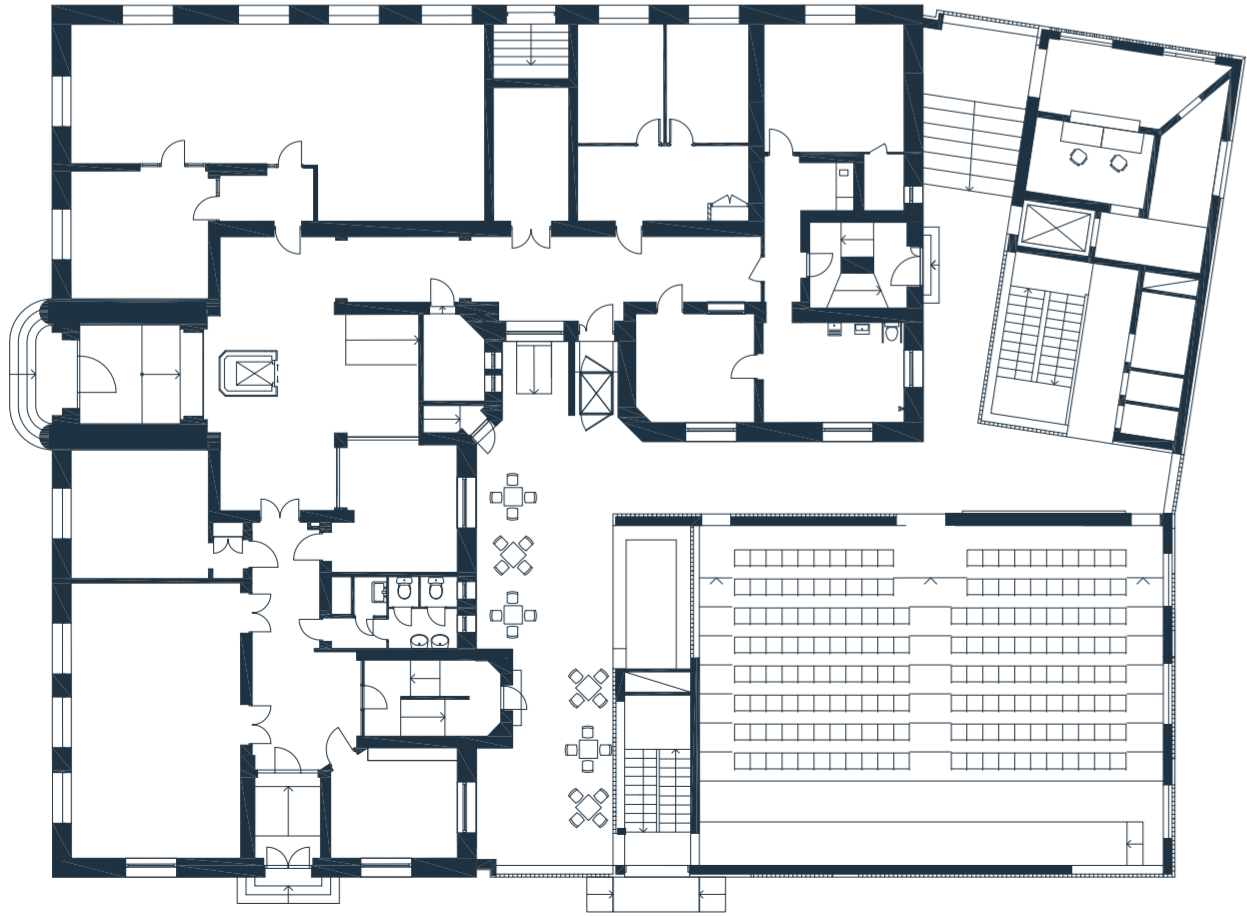


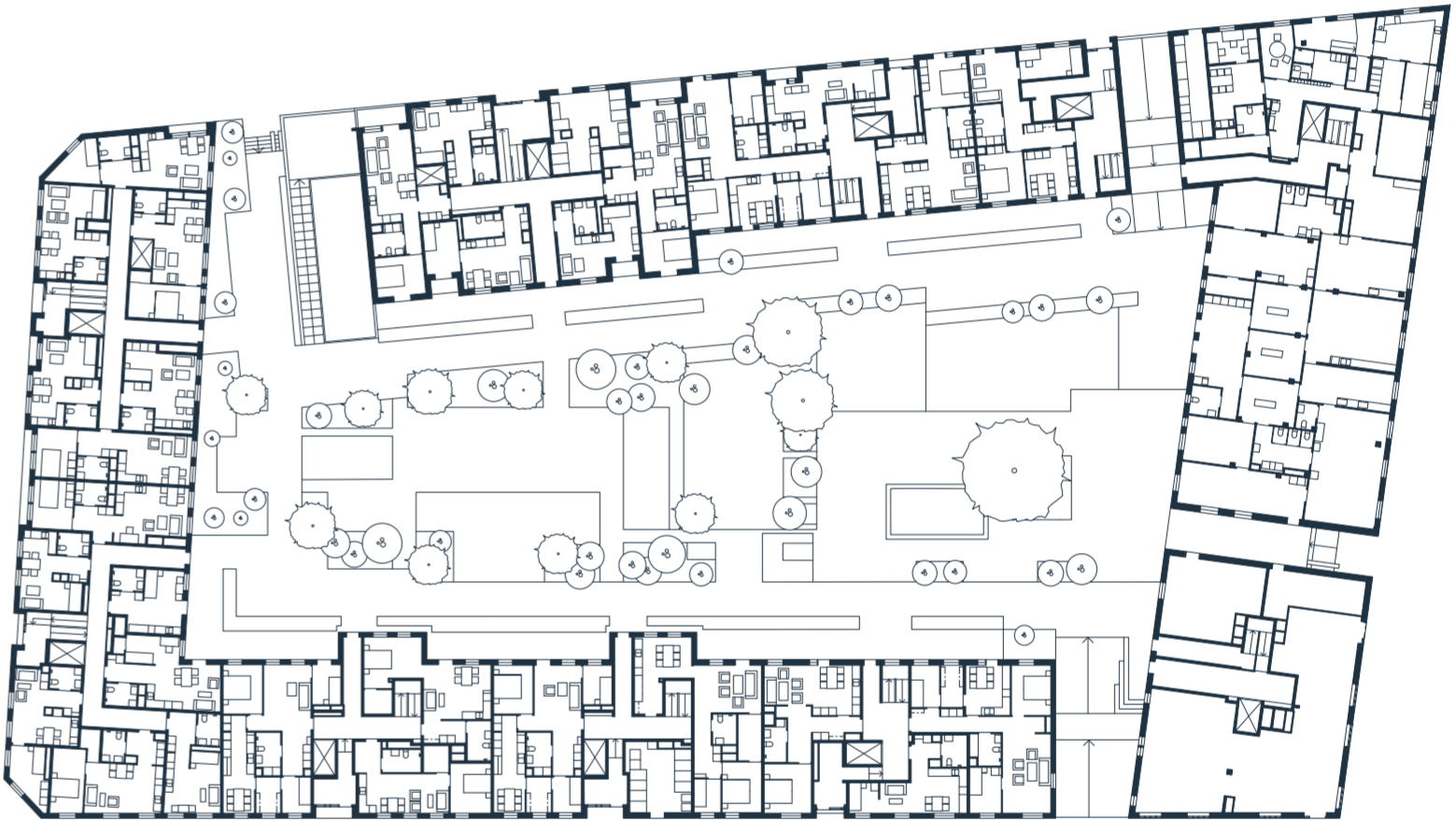
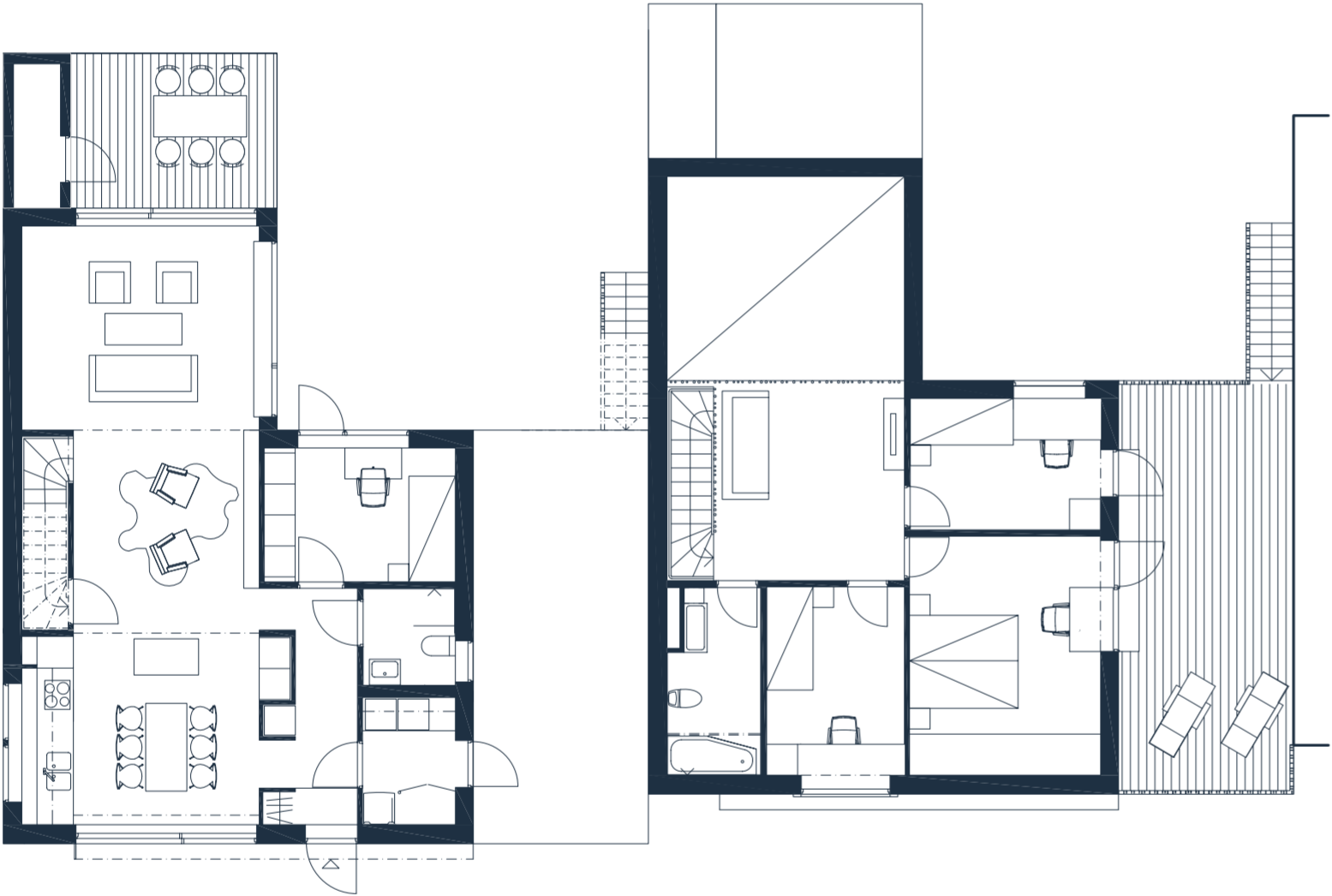


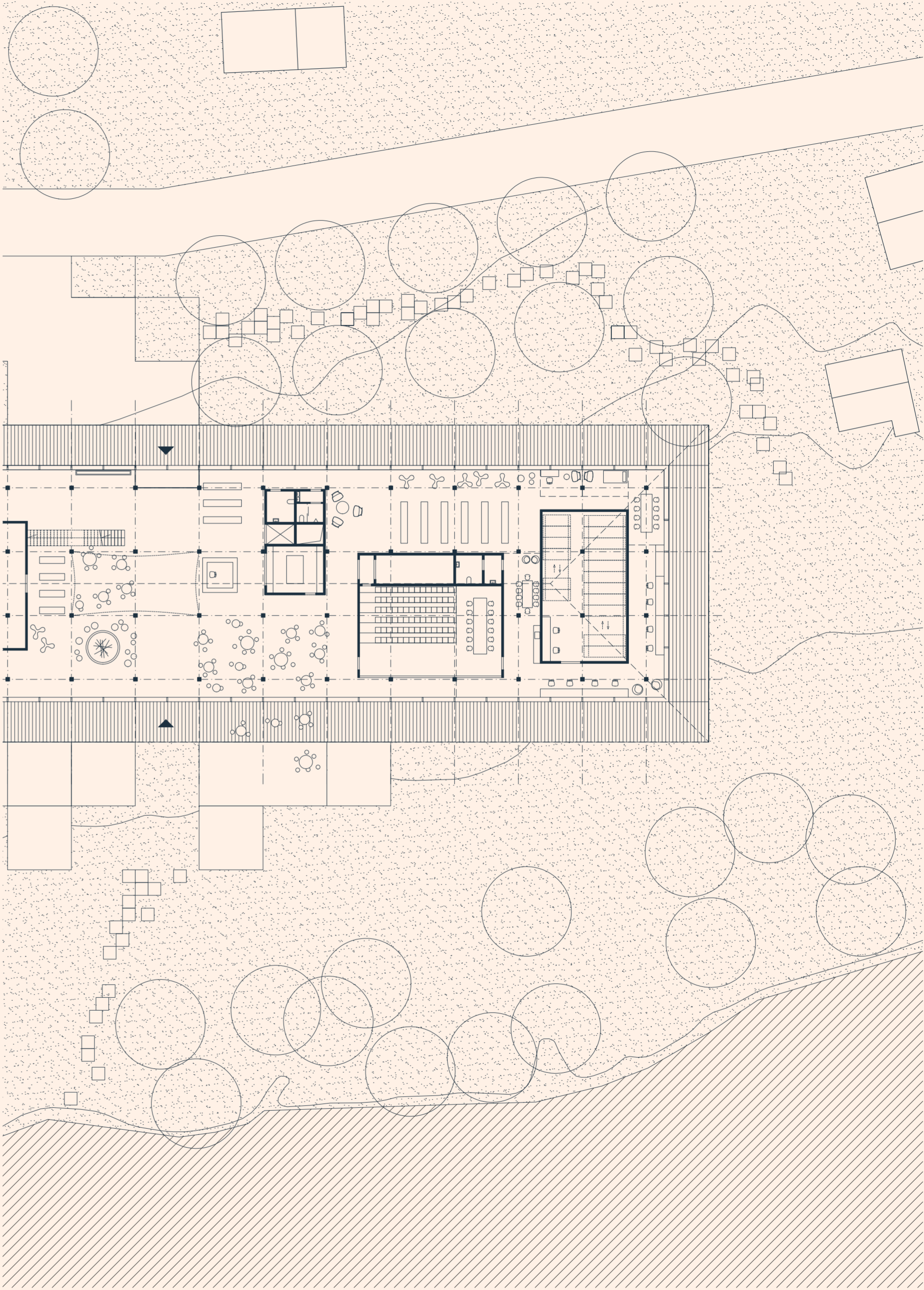
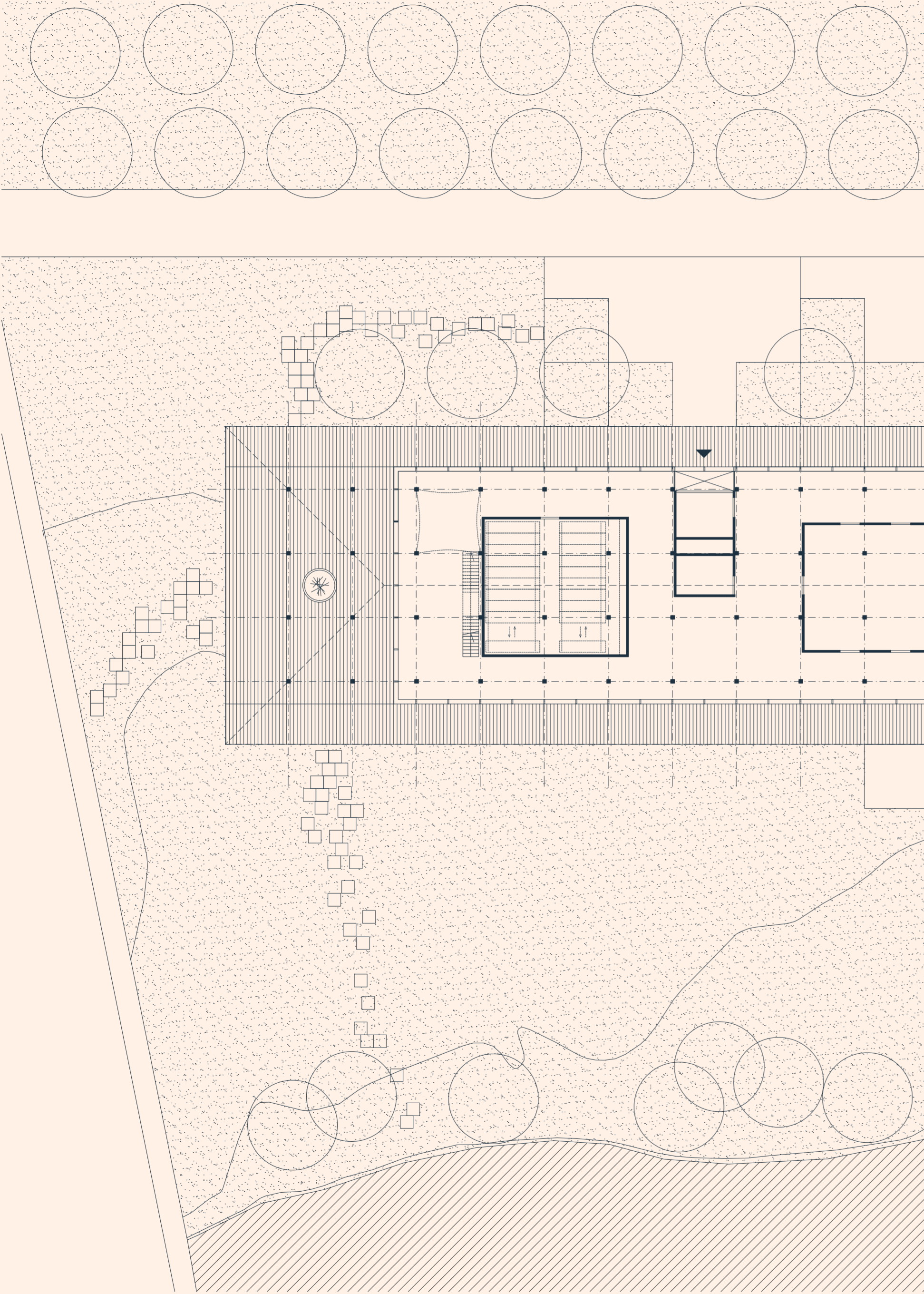


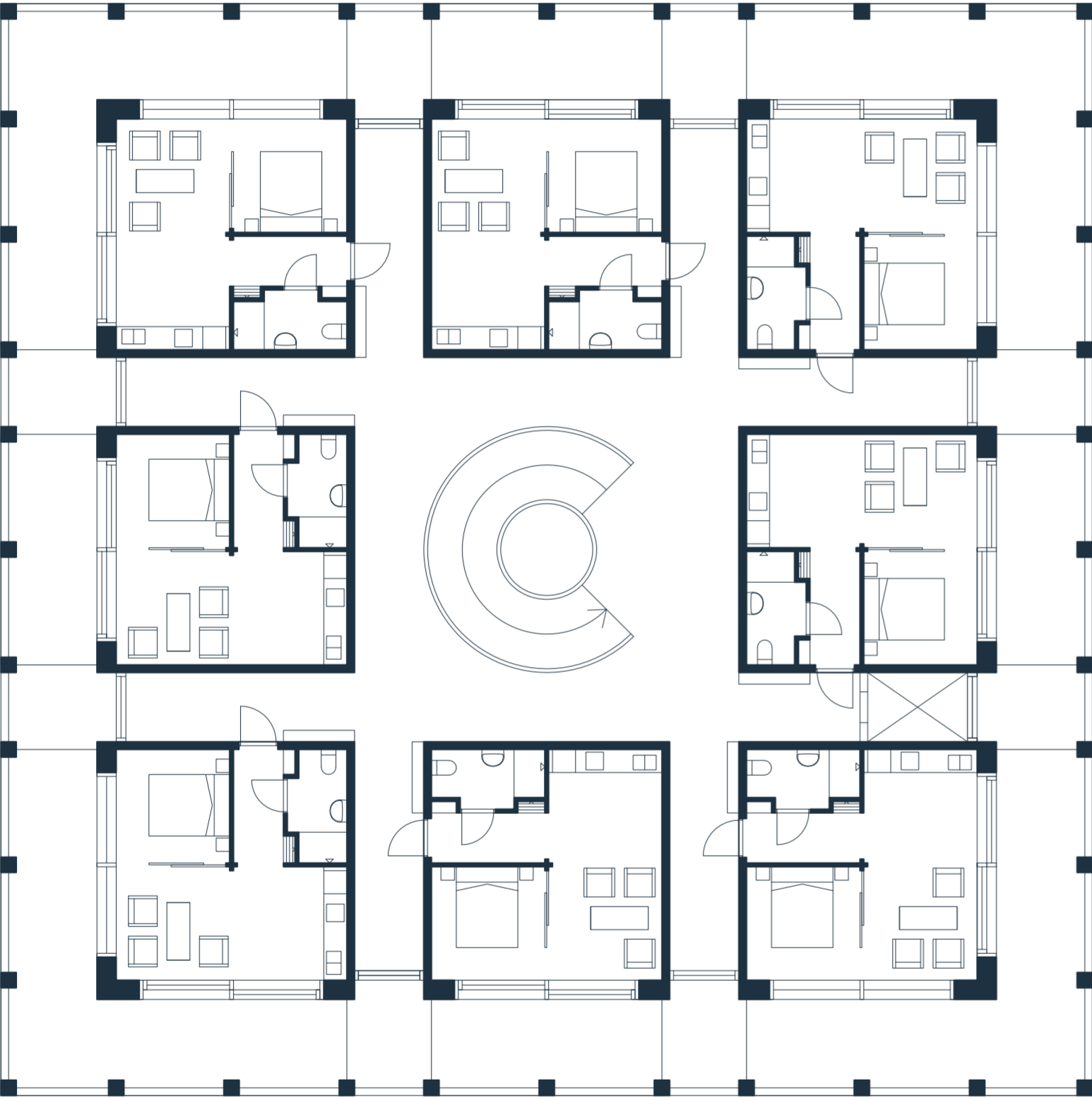


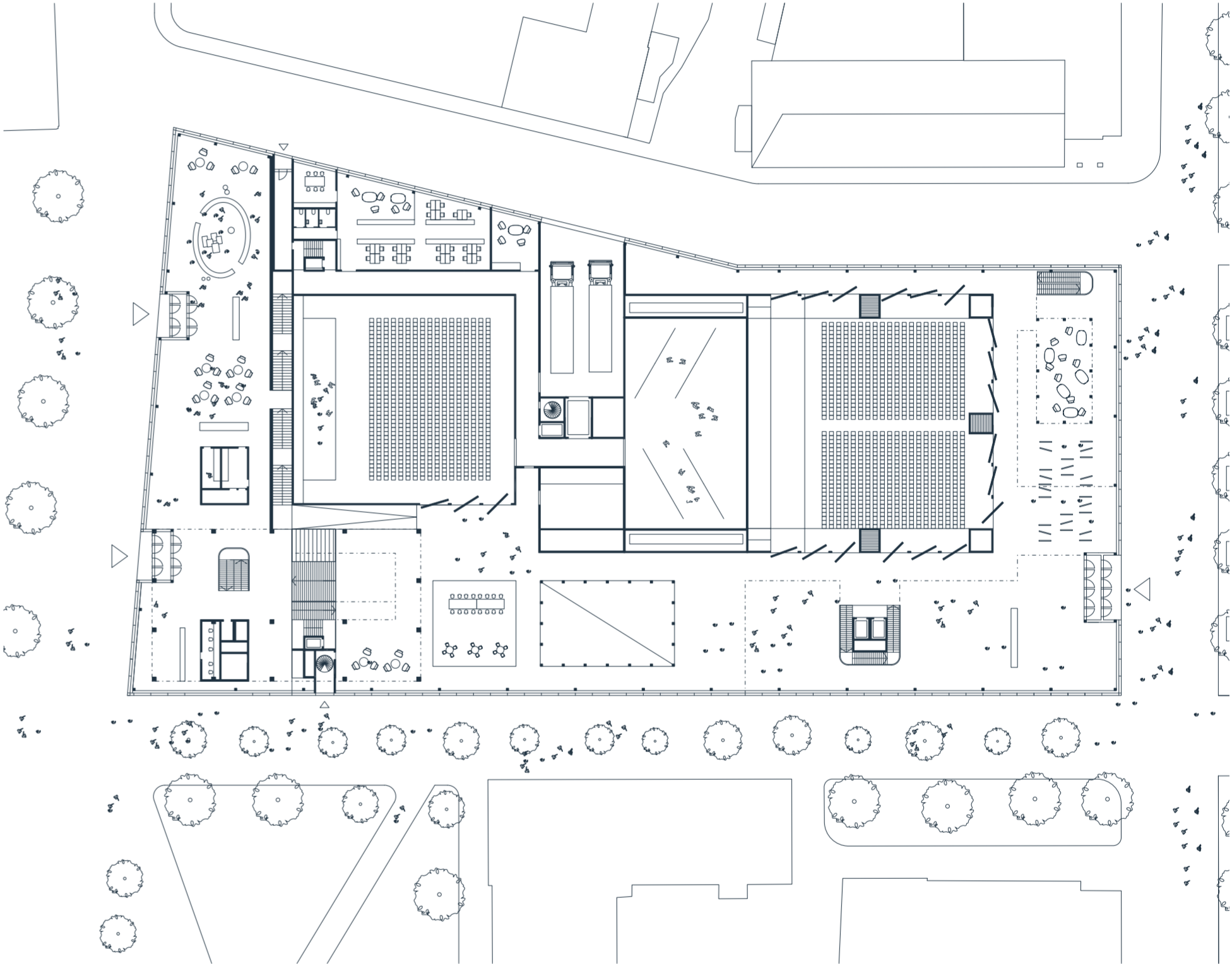
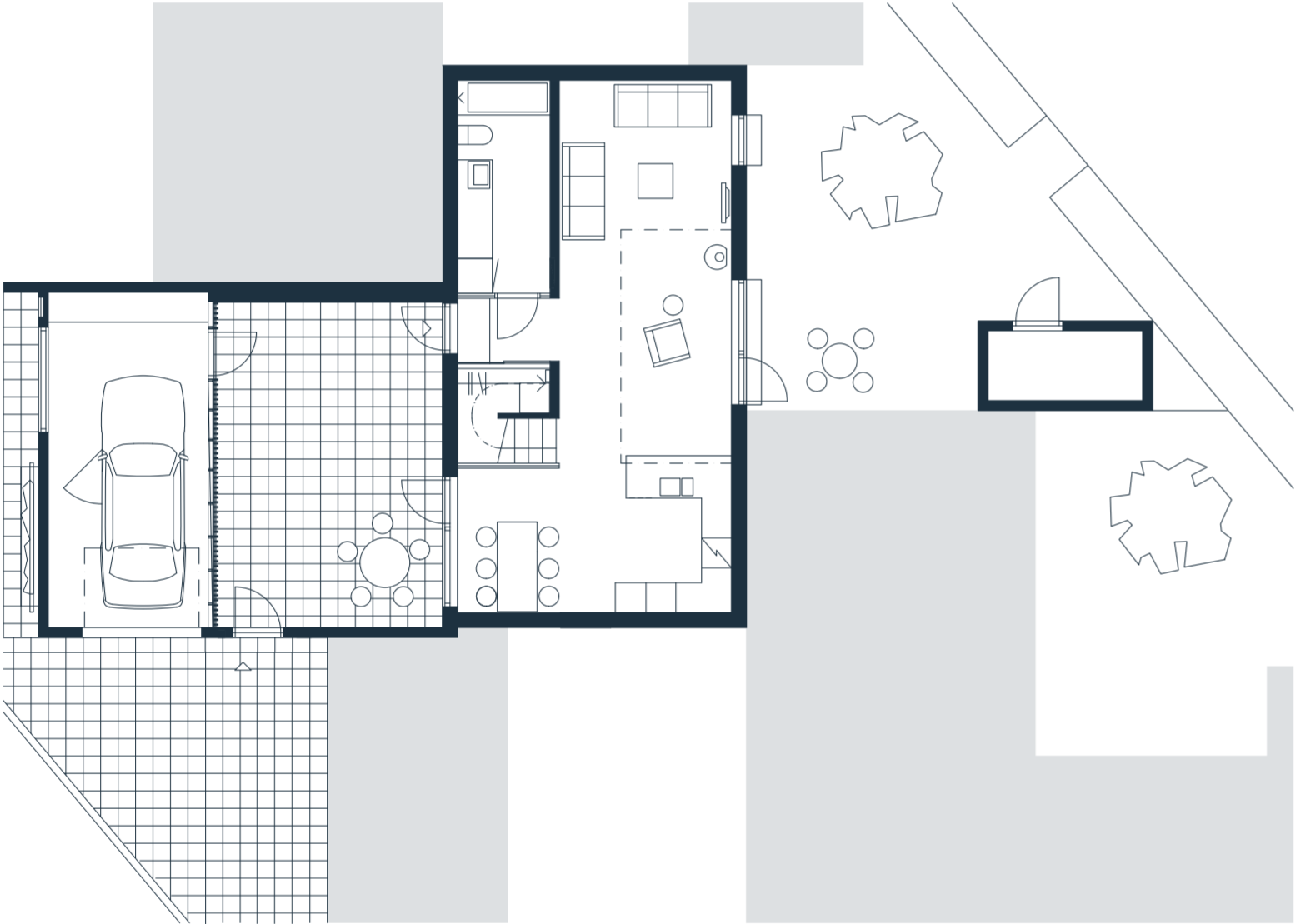


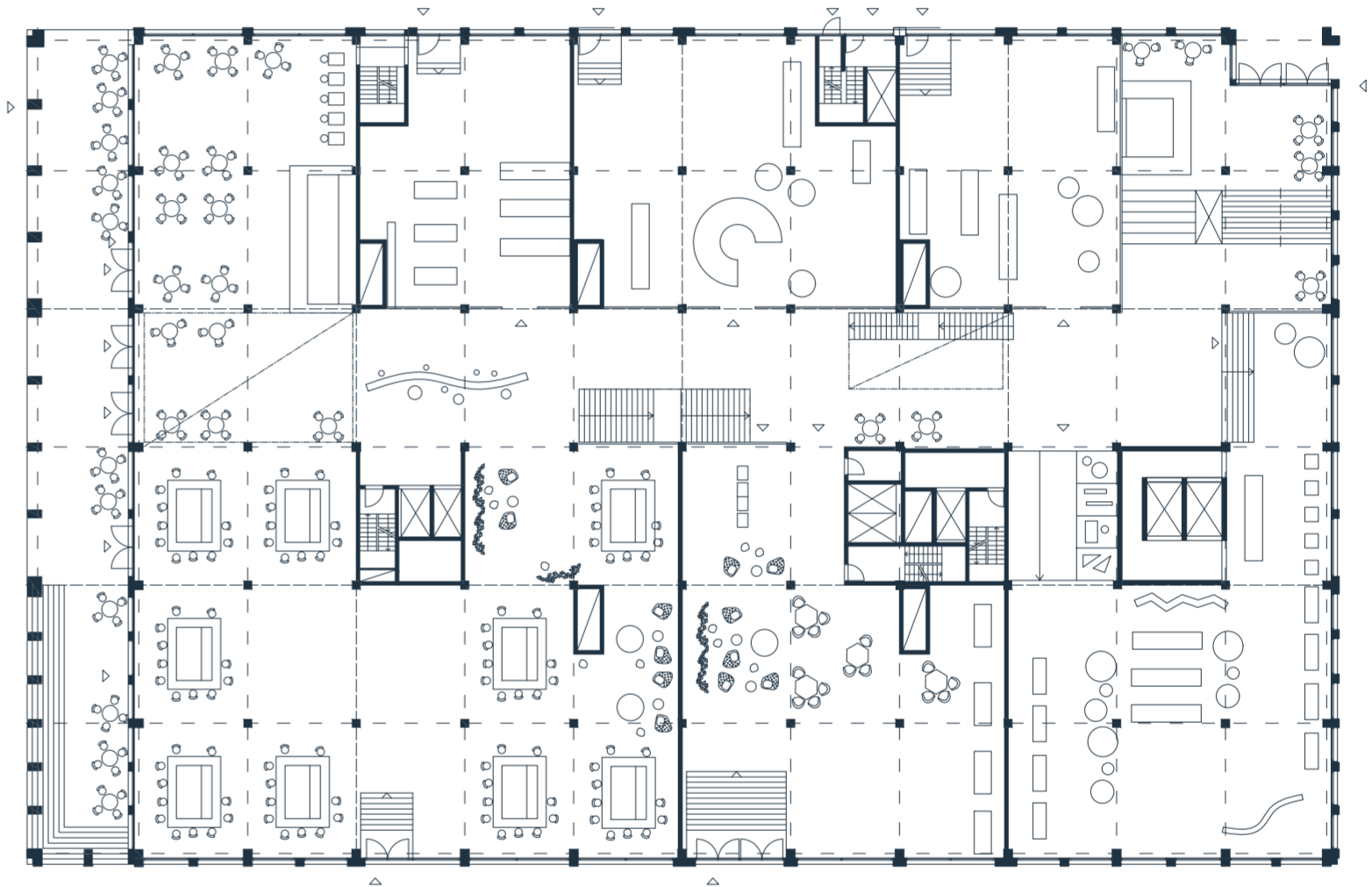
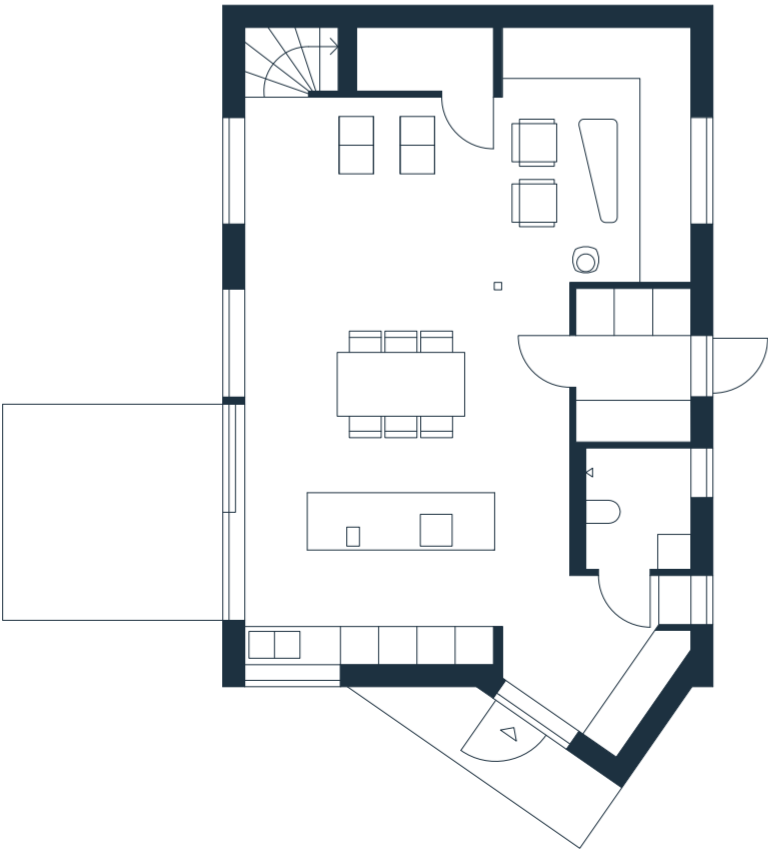
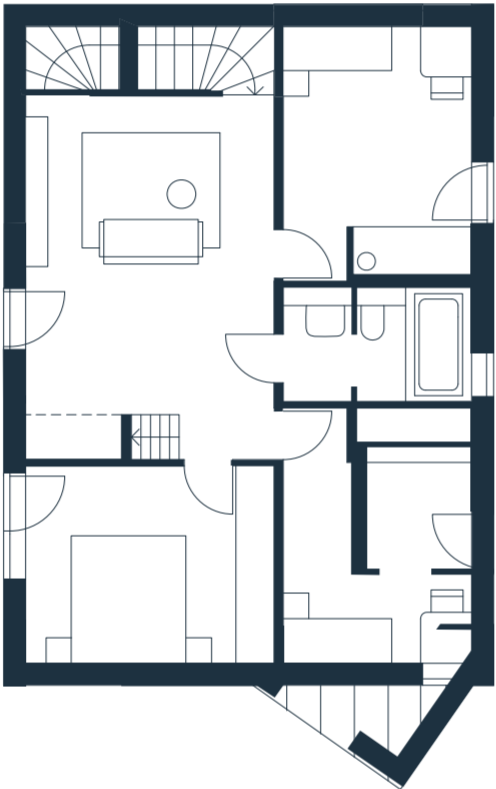
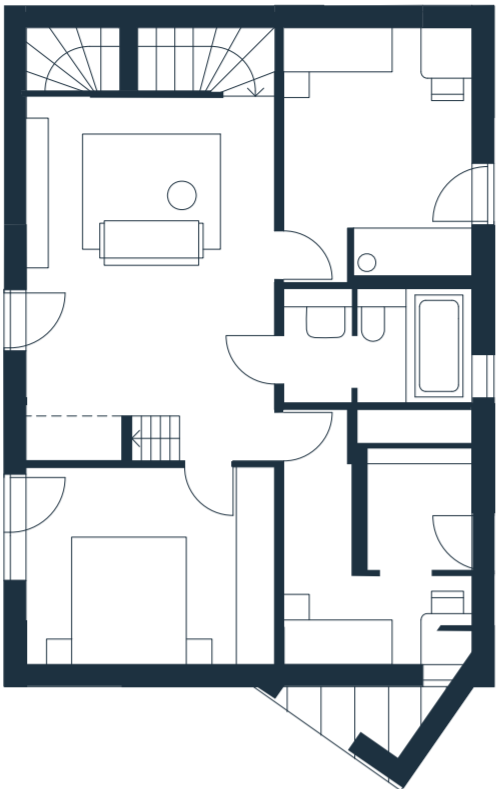














01	Etaget Residential Tobin Properties 2018 Stockholm	11	The forests of Venice Exhibition La Biennale di Venezia Promotor: Folkhem, SI 2016 Venice, Italy	21	Sparsamheten Residential Byggnadsfirman Erik Wallin 2010 Stockholm
02	Citadells kajen Residential Skanska 2019 Malmö	12	Sjöterrassen Residential Hemgården 2013 Botkyrka	22	Gjutarängen Residential Uppsala hem 2018 Uppsala
03	Sala Backe Residential Genova 2016 Uppsala	13	Museum of Forest Finn Culture Museum Competition 2017 Svullrya, Norway	23	Museum of Forest Finn Culture Museum Competition 2017 Svullrya, Norway
04	Elinelund Residential Nordr 2020 Malmö	14	Monoliten Residential JM 2015 Stockholm	24	Idre North Park Hotel Far North Development 2021 Idre
05	Bredvik Residential GBJ Bygg 2021 Växjö	15	Woodhouse Rosendal Residential Skandiafastigheter 2014 Uppsala	25	Annedalsterrassen Residential Erik Wallin, Viktor Hanson, Trifarm 2013 Stockholm
06	Stora Katrineberg Residential Sjaelsö 2007 Stockholm	16	Länsrådet Residential Einar Mattson Byggnads AB 2008 Stockholm	26	Torparflickan Residential SMÅA 2010 Stockholm
07	Magnolia restaurant Restaurant Stiftelsen Stora Sköndal 2018 Stockholm	17	Bergsvåg Residential Byggnadsfirman Erik Wallin 2015 Stockholm	27	Glänta Cultural centre, hotel Competition 2016 Skellefteå
08	Ylivieskan Kirkko Religious Competition 2017 Ylivieska, Finland	18	Gjuteriet Office, restaurant Varvsstaden 2021 Malmö	28	Villa VY Residential Private Partner: Annica Carlsson, Equator 2008 Stockholm
09	Maja Gräddnos Residential Skanska Nya Hem 2015 Stockholm	19	Tornhuset University Competition 2011 Malmö	29	Paushuset Commercial, office, residential ALM Småa, Andersson Company 2020 Enköping
10	Fredriksdal Residential Skanska 2016 Stockholm	20	Jureskogs Restaurant Jureskogs 2019 Mjölby	30	Campus Sköndal University Stiftelsen Stora Sköndal 2018 Stockholm

