



# Kjellander Sjöberg

Gjuteriet

# Kjellander Sjöberg: Gjuteriet

Catalogue by Stefan Sjöberg and Andrea Sclafani

## Graphic material

Kjellander Sjöberg

Varvstaden

Rasmus Hjortshøj – COAST

Petra Bindel

Axel Stenberg

Malmö Muséer

Tyréns

Engram

Exact

## Organisation

Client: Varvsstaden, PEAB

Tenant: Oatly

Collaboration: Sted Landskap, Reijlers, Tyréns, Matter by Brix, BK Konsult, Restaurera and Martinsons

## Published by Kjellander Sjöberg, 2024

Kjellander Sjöberg was founded in 1998 and is a medium-sized architectural practice with a diverse and dedicated international team led by three partners:

Mi Inkinen, Ola Kjellander and Stefan Sjöberg.

KS operates from Stockholm, Malmö and London, vibrant cities where we are a part of ongoing transformations to improve and create new liveable places. We work on every scale to support people's daily life and generate rich, green urban experiences.

We are driven by developing sustainable projects that meet the challenges of climate change and make meaningful use of resources; that tell a story of life, content, interaction, local neighbourhoods and society. We base all our work on a collaborative approach and dialogue, to create urban areas, buildings and landscapes that actively contribute to shaping a better future.

[kjellandersjoberg.com](http://kjellandersjoberg.com)  
[press@kjellandersjoberg.se](mailto:press@kjellandersjoberg.se)

ISBN 978-91-519-1006-2



# INTRODUCTION

## Teeming poetry of place

The Malmö shipyard is derelict. A place that once served a purpose, based around linear production processes with material flows and people working, which has grown out of needs and demands. A rich story with accumulated social and material values. Workshops, halls, warehouses, and quays. Altered and handled unsentimentally over time. Another type of spatial structure and theme, with a specific materiality, detailing and scale.

The abandoned, formerly secluded area is developing into an active urban district, Varvsstaden, with new connections and meeting places. A permissive place full of promises that opens up to a reinterpretation of what a city may be, with new content and new typologies.

## Gjuteriet - a versatile and flexible building, adapting to changing needs

Gjuteriet is a visible, prominent building in Malmö, a historic player in the shipbuilding industry and a key part of the City's identity. Originally built in 1910 as a foundry producing metal castings for ship and bridge building components, it has been adapted to serve changing needs over the years. Newer extensions added to the north, west and east had been subsequently demolished each leaving their particular imprints on the existing facades.

The building was found in a severely dilapidated state, with a collapsed roof that left the ruin exposed to the elements. The east and west facades were fragile and heavily fragmented. Starting with what was already there, the imposing steel structure, the brick walls, the frail and broken patchwork of elements, the approach was to preserve as much as possible, to leave and reveal traces and memories which told the story of the building.

## Spatial significance and rational structure

The large industrial hall with an existing steel frame and traverse is filled with meeting places and spaces for social interaction, forming an environment encouraging collaboration, informal encounters and wellbeing. The new design introduces spaces and floors to create unexpected visual connections and a dynamic spatial sequence while preserving the experience of the large industrial space as a whole, lit by new skylights replacing originals ones.

Two new volumes are hung from historic industrial overhead crane runways, reducing the number of columns needed to allow large open ground floor spaces which can accommodate a wide range of flexible uses. The main entrance, lobby, café and restaurant are located to the south of the building and connect directly to the quay. This public street-level programming links both the existing dry dock to the north and a new square to the west. Internally the rational existing loadbearing structure allows up to four individual tenants on each floor, vertically interconnected by dramatic staircases rising through the central atrium and two secondary side stairs and lifts.

## Circular economy with re-use and repurposed materials

The main strategy to minimise the use of resources and climate impact was based on making smart choices to maximise material sustainability. Central to this approach was the use of recycled and upcycled materials recovered from building demolitions in the local area including brick, chequer plates, stairs, steel profiles, perforated sheet metal and more. Along with the preservation and re-use of existing building materials and components, timber is used as the main new regenerative construction material to reduce carbon emissions and the overall ecological footprint. Timber was also selected as a lightweight material to reduce the load on the existing structure and avoid the need for new foundations.

## The workplace

Around 300 workspaces are arranged across a total of 4,900 sq m. of layered and suspended floors. A café with a barista-receptionist and a canteen for both the employees and public are the social heart of a creative hub with meeting rooms, open lounges, conference rooms, a conservatory, studios, exhibition spaces, a test kitchen and wellness facilities. All circulation areas are designed as wide galleries encouraging informal talks and spontaneous "corridor chats"; places to also pause and slow down. Temporary workplaces and open meeting rooms face the central atrium whilst more permanent uses are located at the perimeter along the facades. Right from the start the tenant emphasised the need for a distinctive and discernible 'whole building experience'; Gjuteriet is therefore not a series of individual floors but conceived as one continuous space. The openness between floors, numerous staircases and shortcuts are designed to connect and create a community with a sense of belonging, accommodating the company's various activities under one roof.

Stefan Sjöberg

Kjellander Sjöberg  
Stockholm, December 2024







02

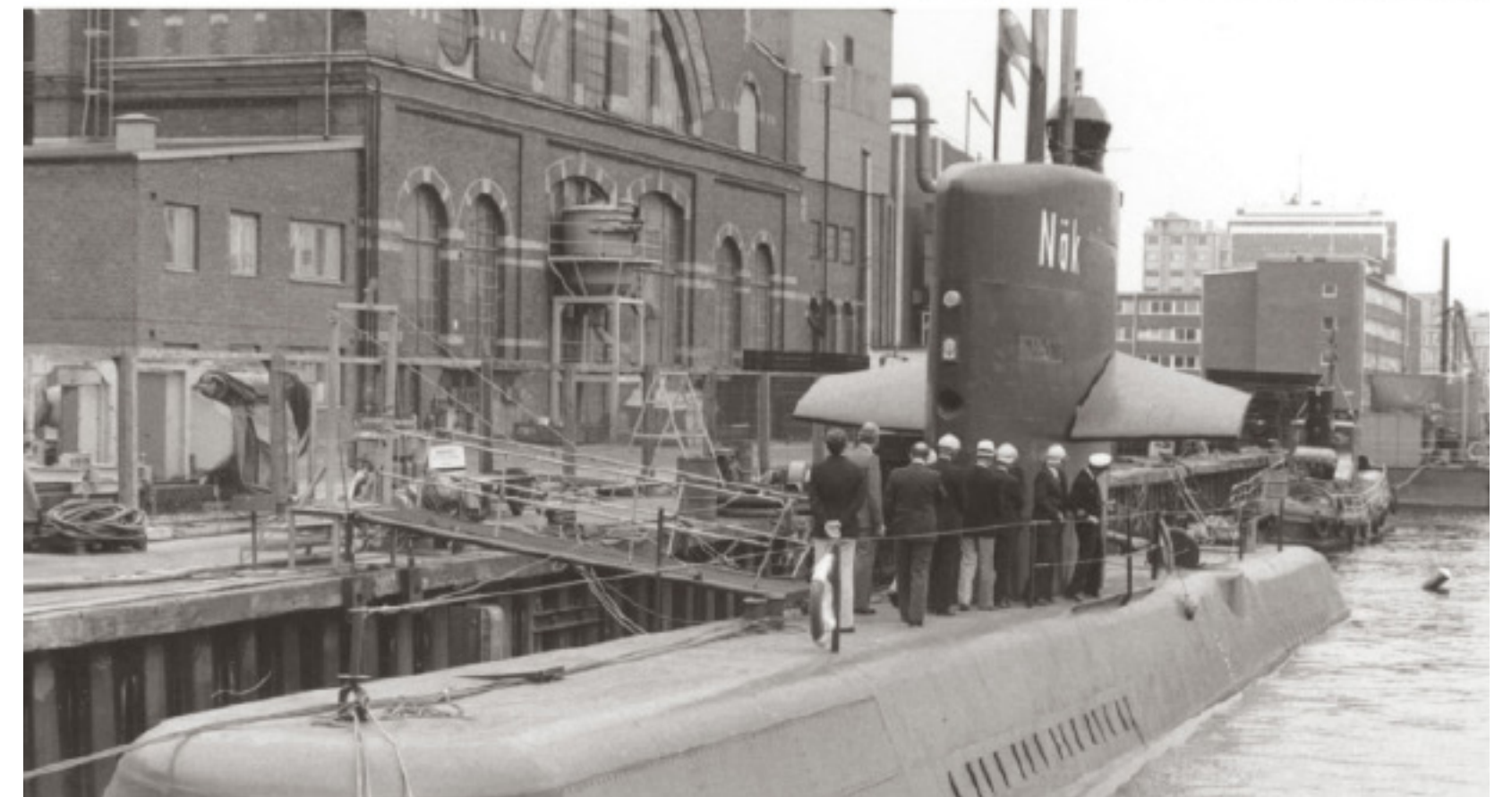


03





‘Part of a new sustainable and circular neighbourhood.’





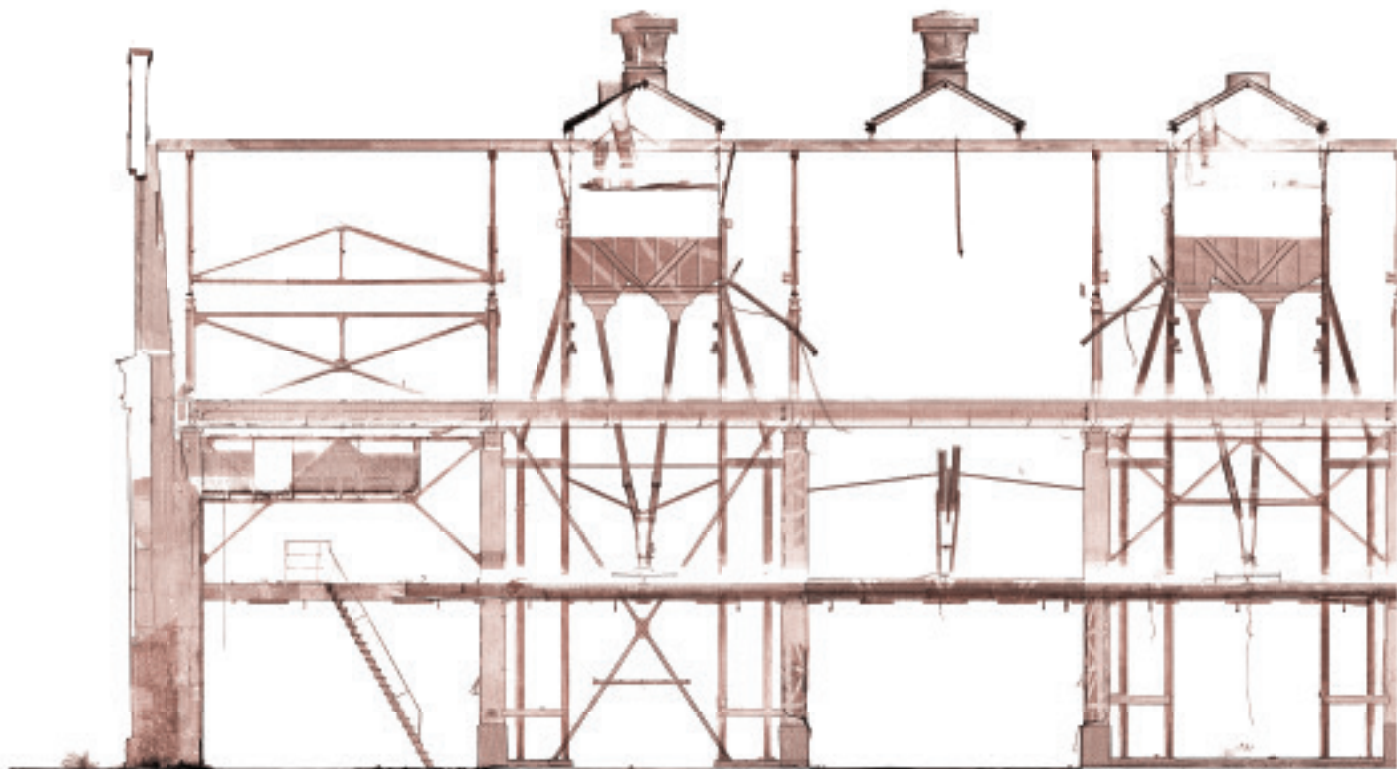
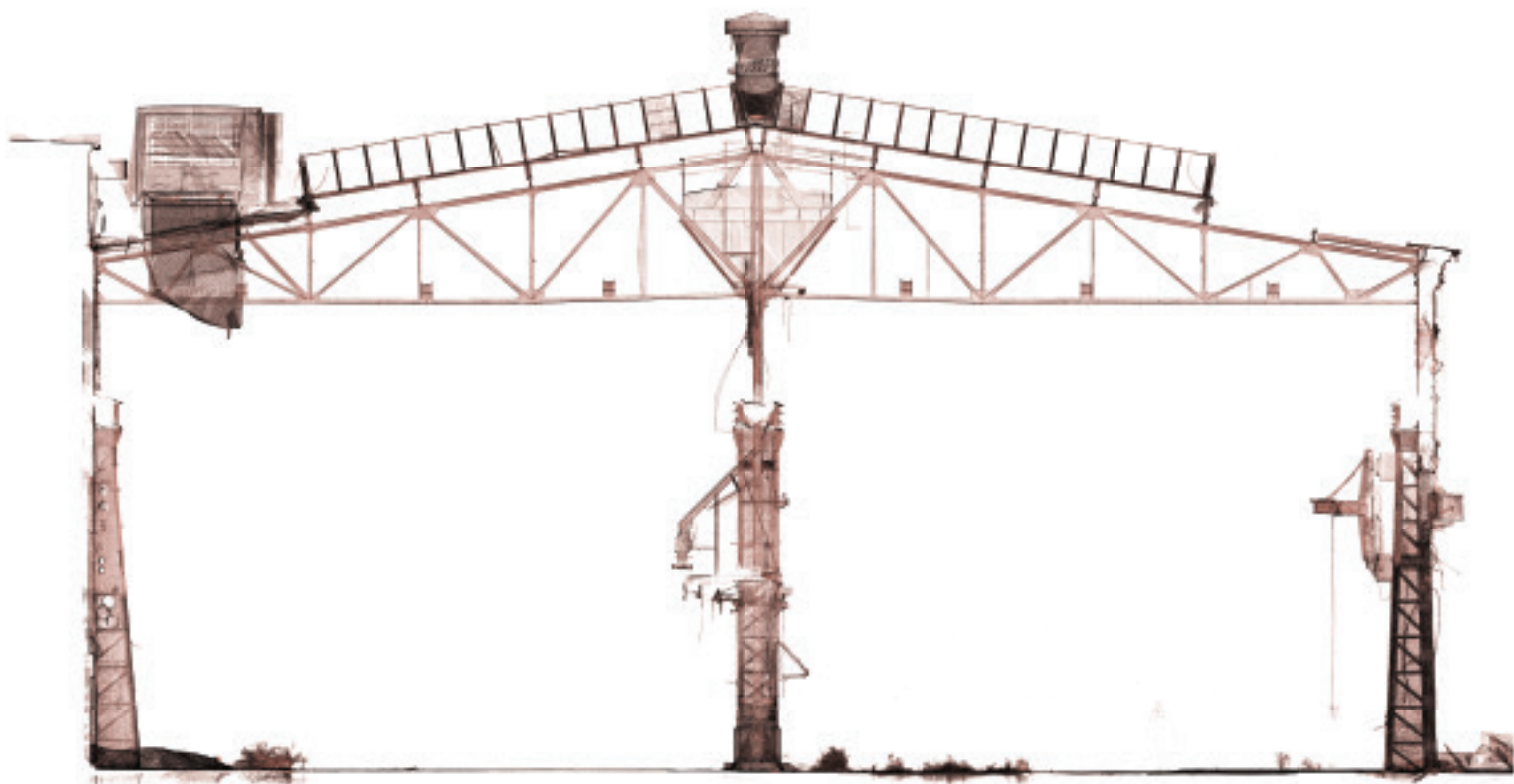
06



07



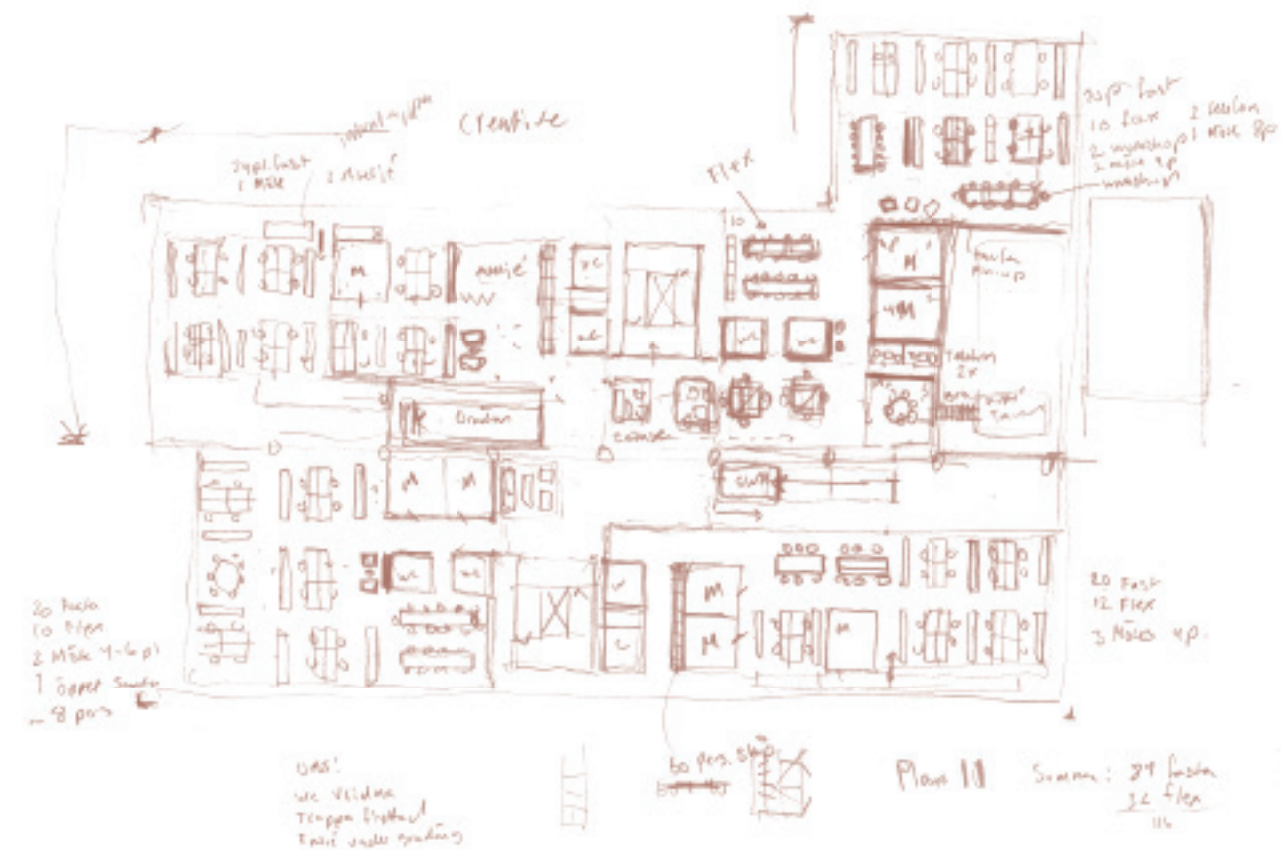
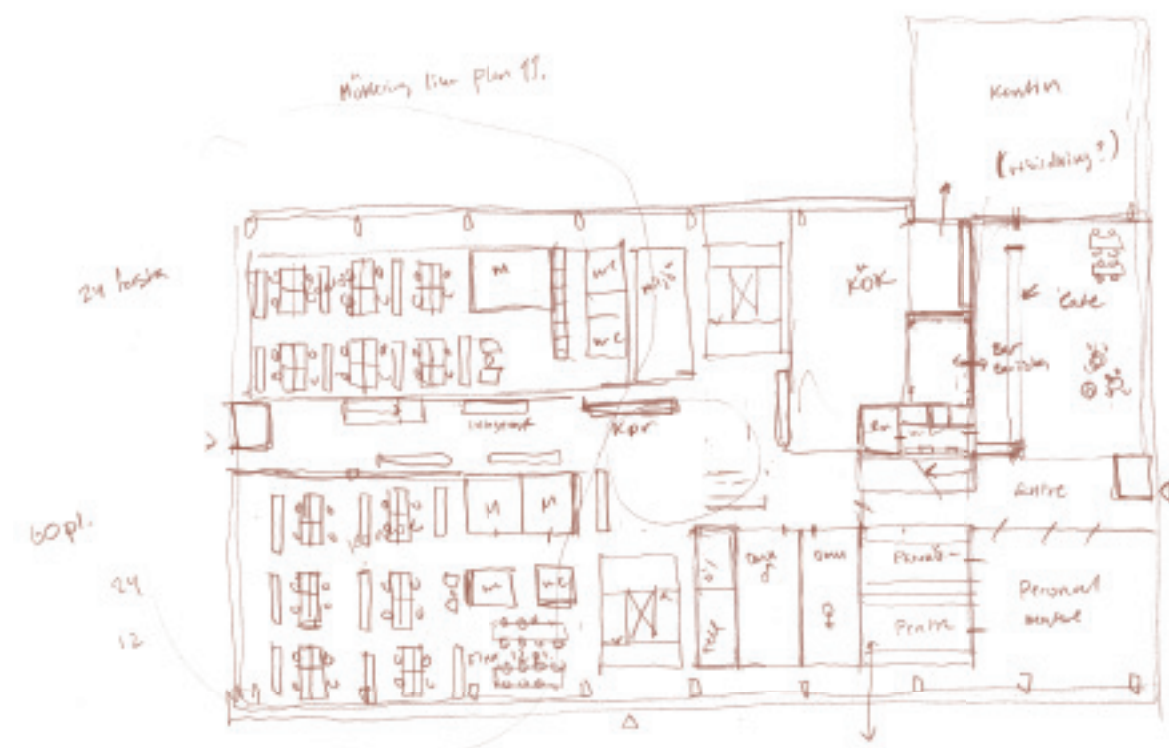




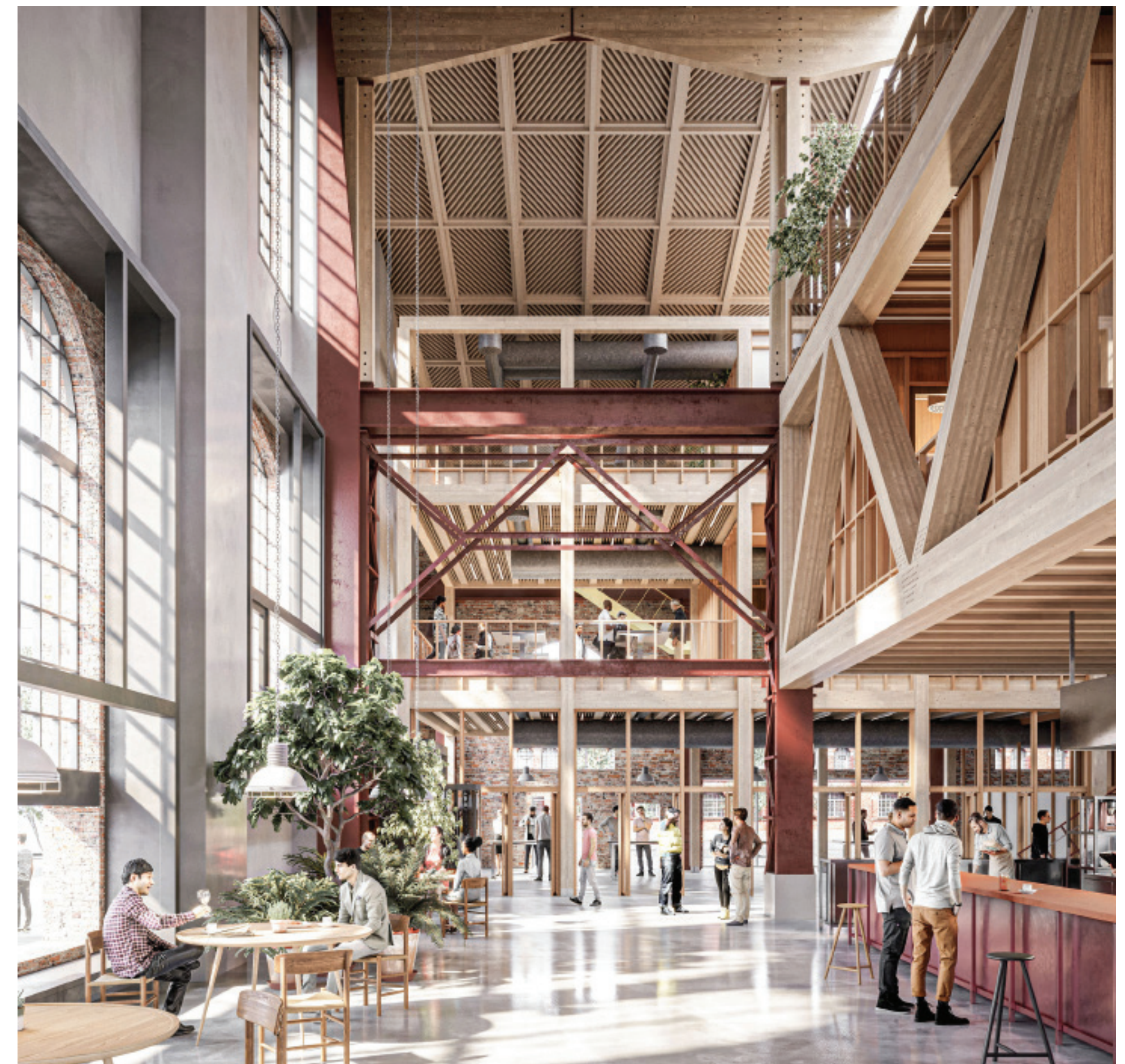








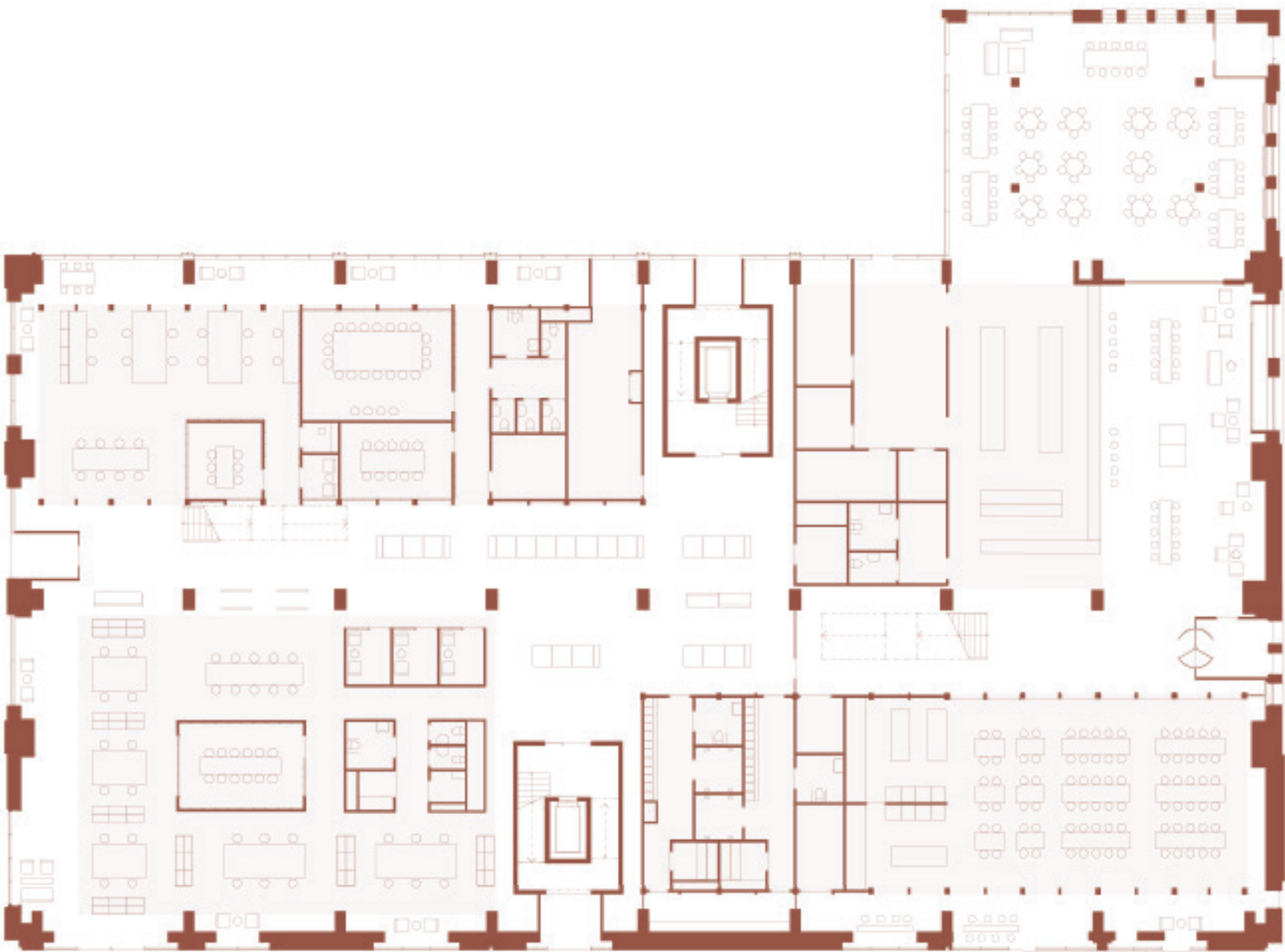
‘Transformation of a historical environment into a new creative meeting place.’



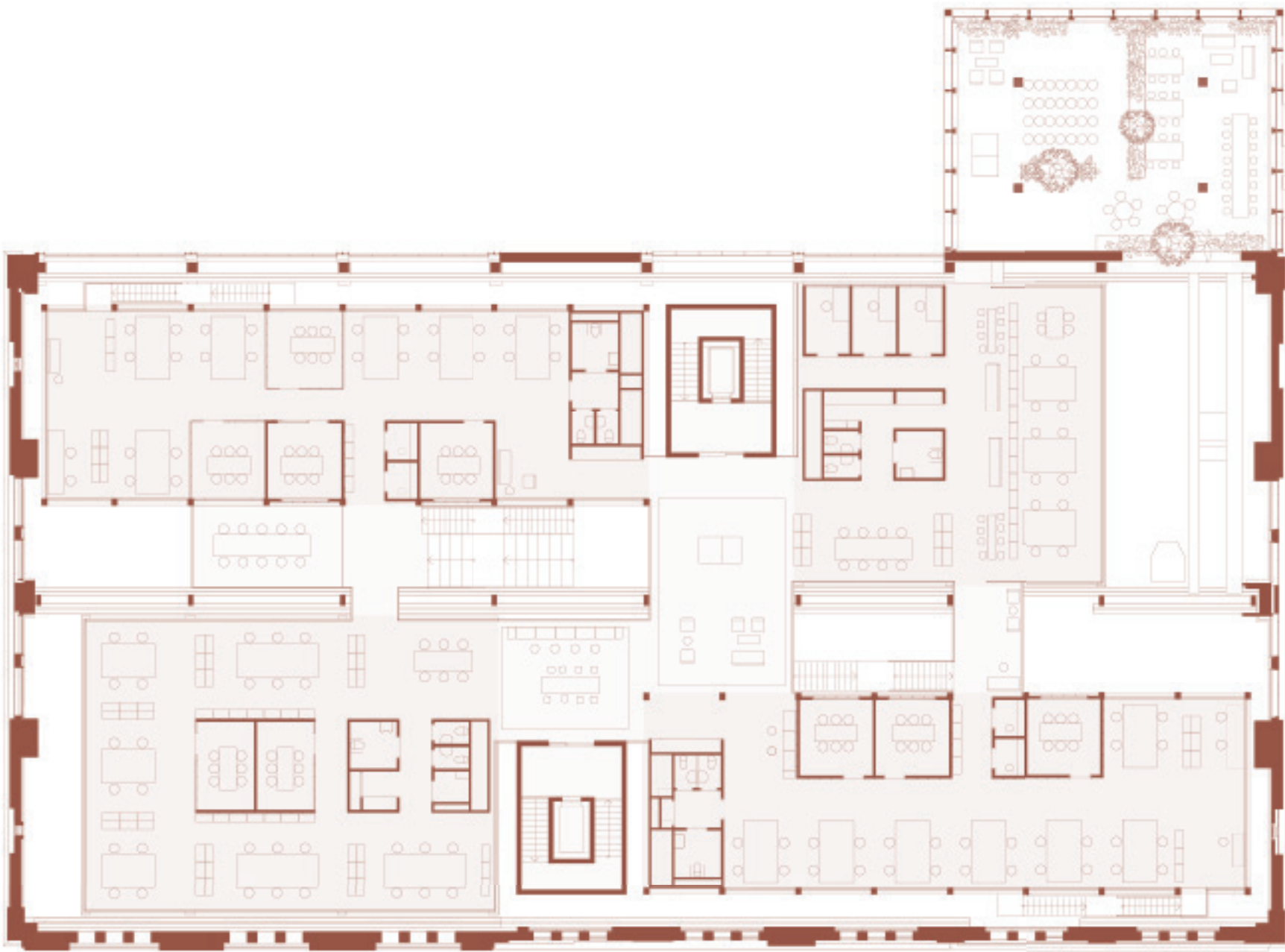


‘An open public programme.’

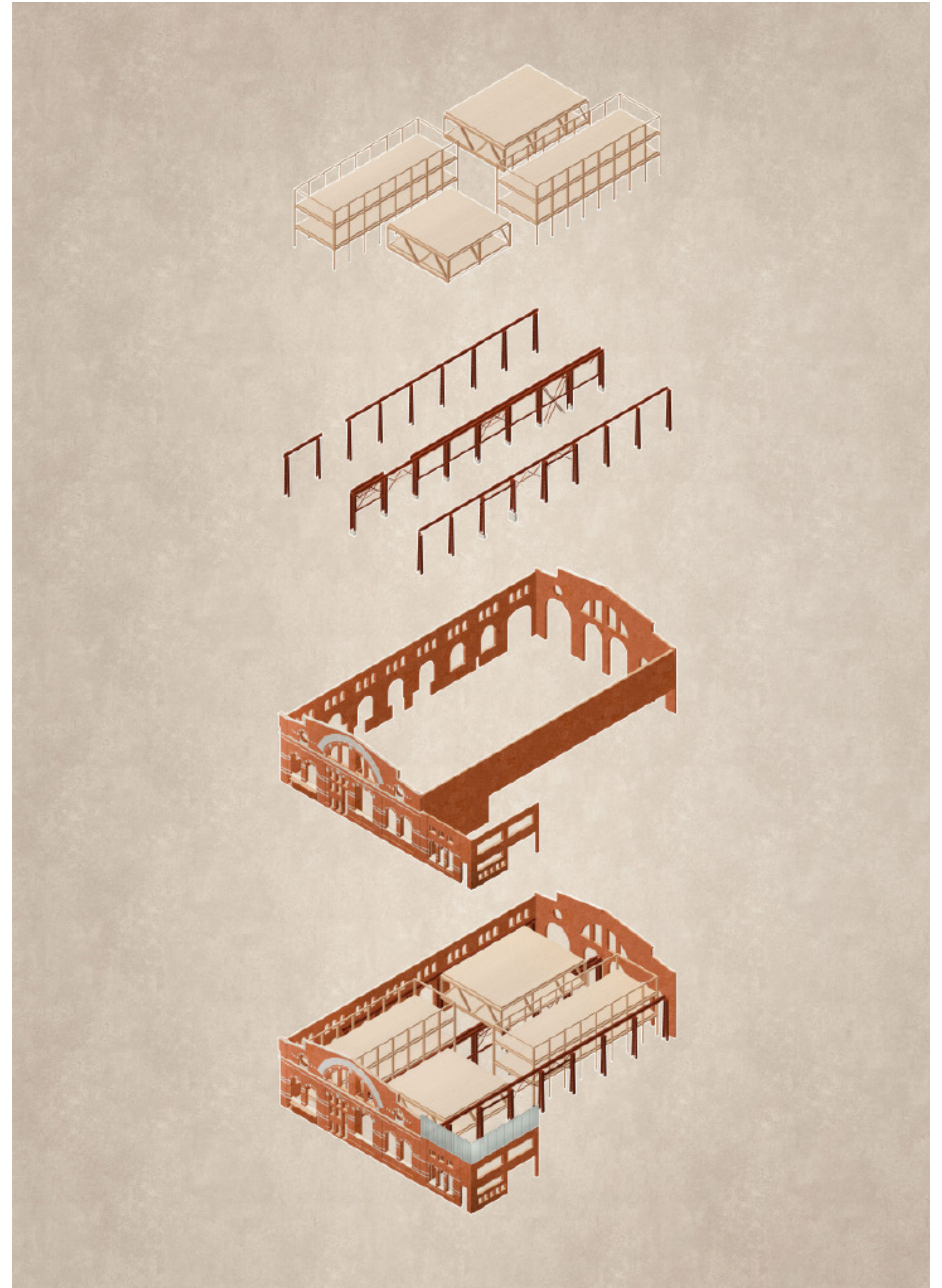
15



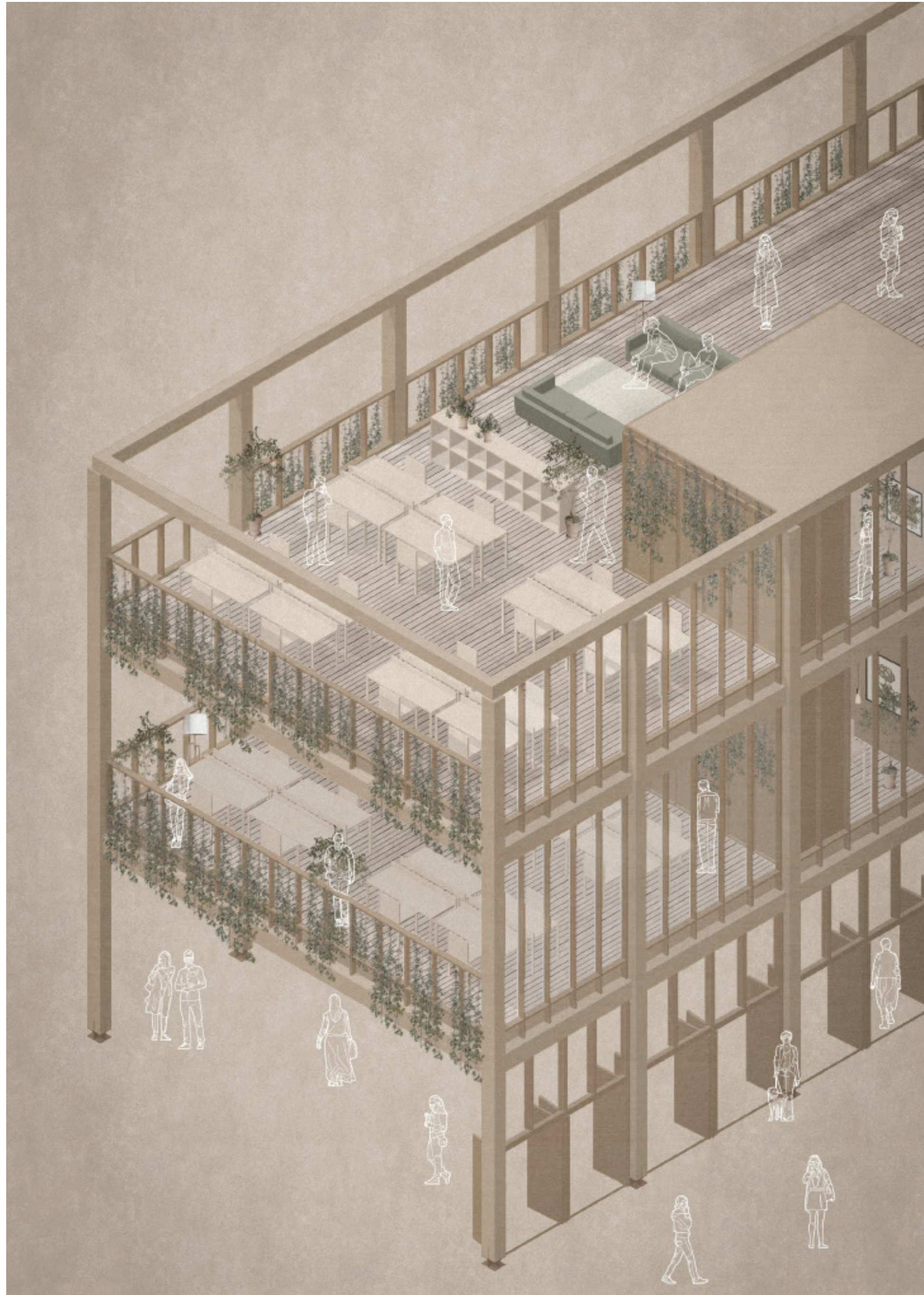
16











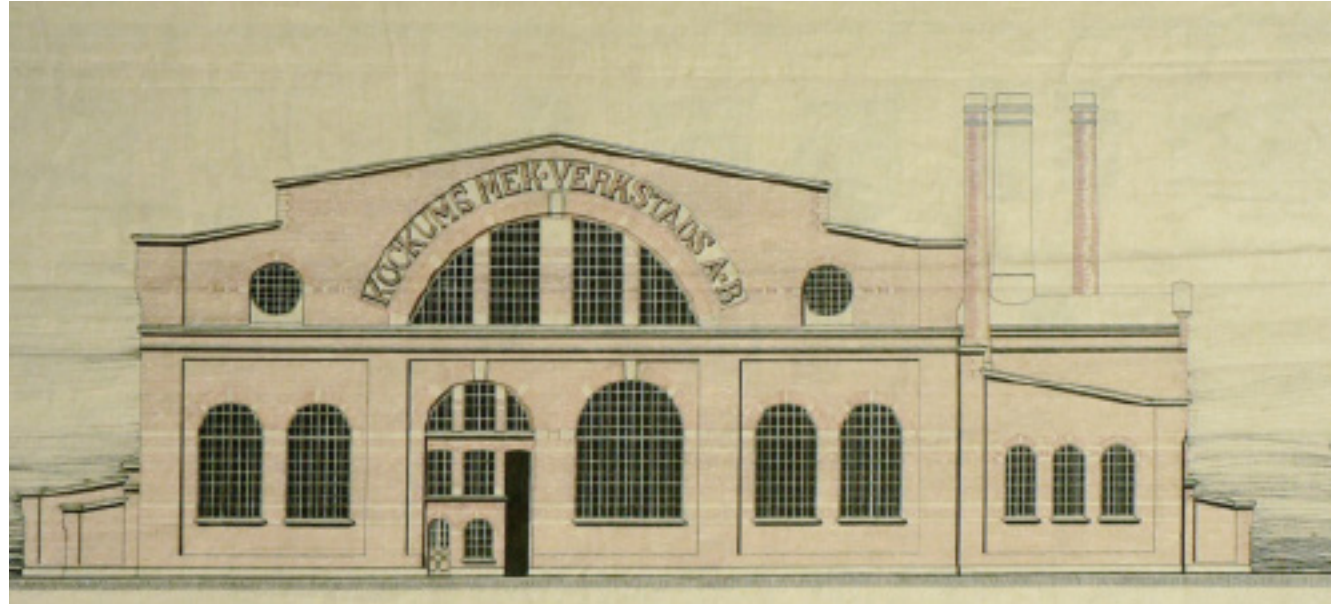


‘Circular economy with re-use and repurposed materials.’





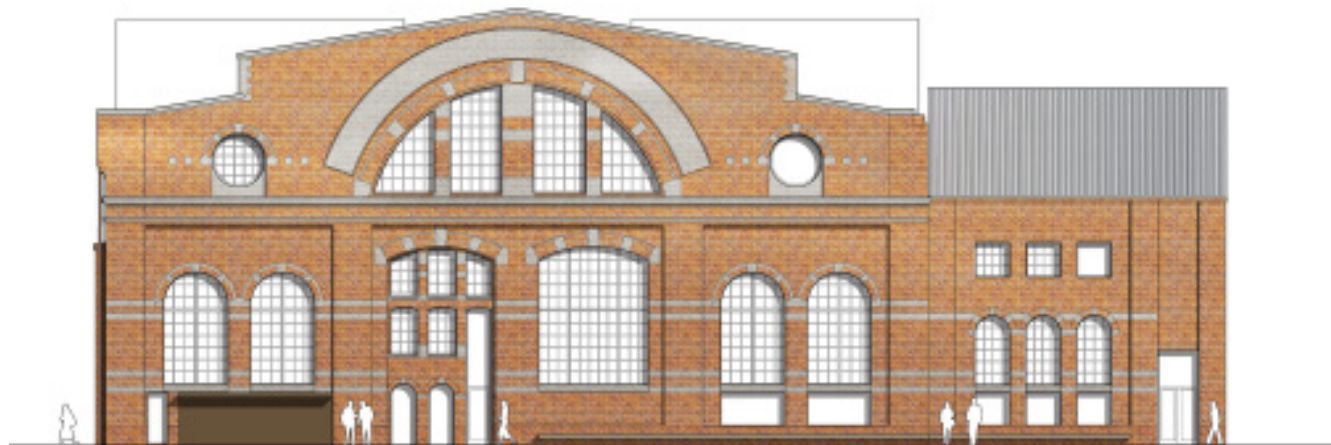
24



25



26



27

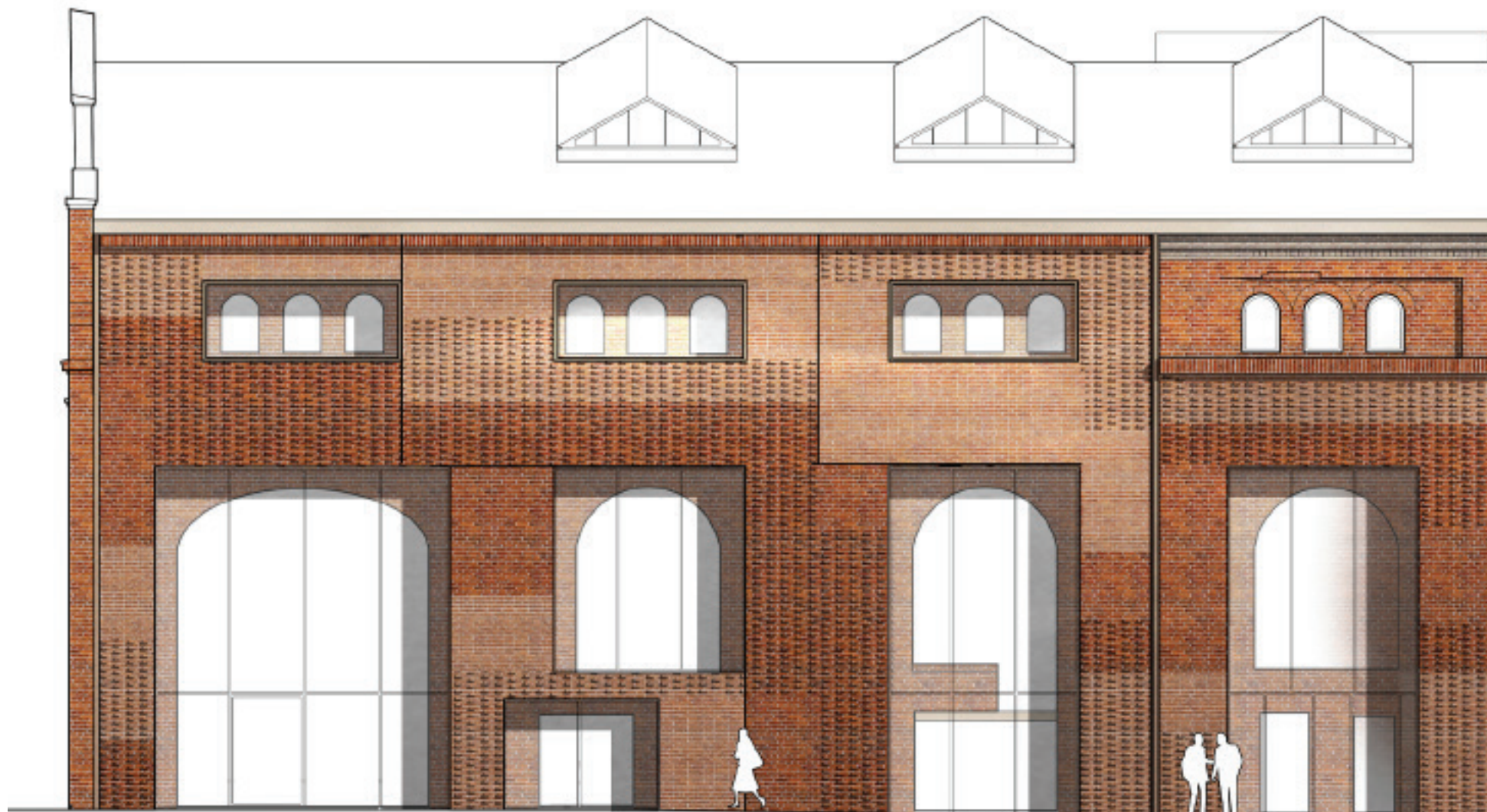




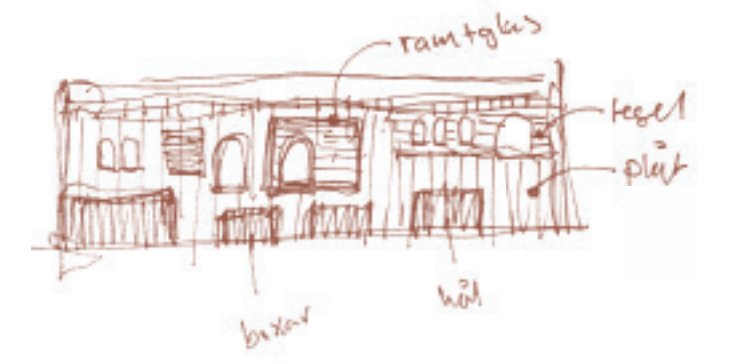
28



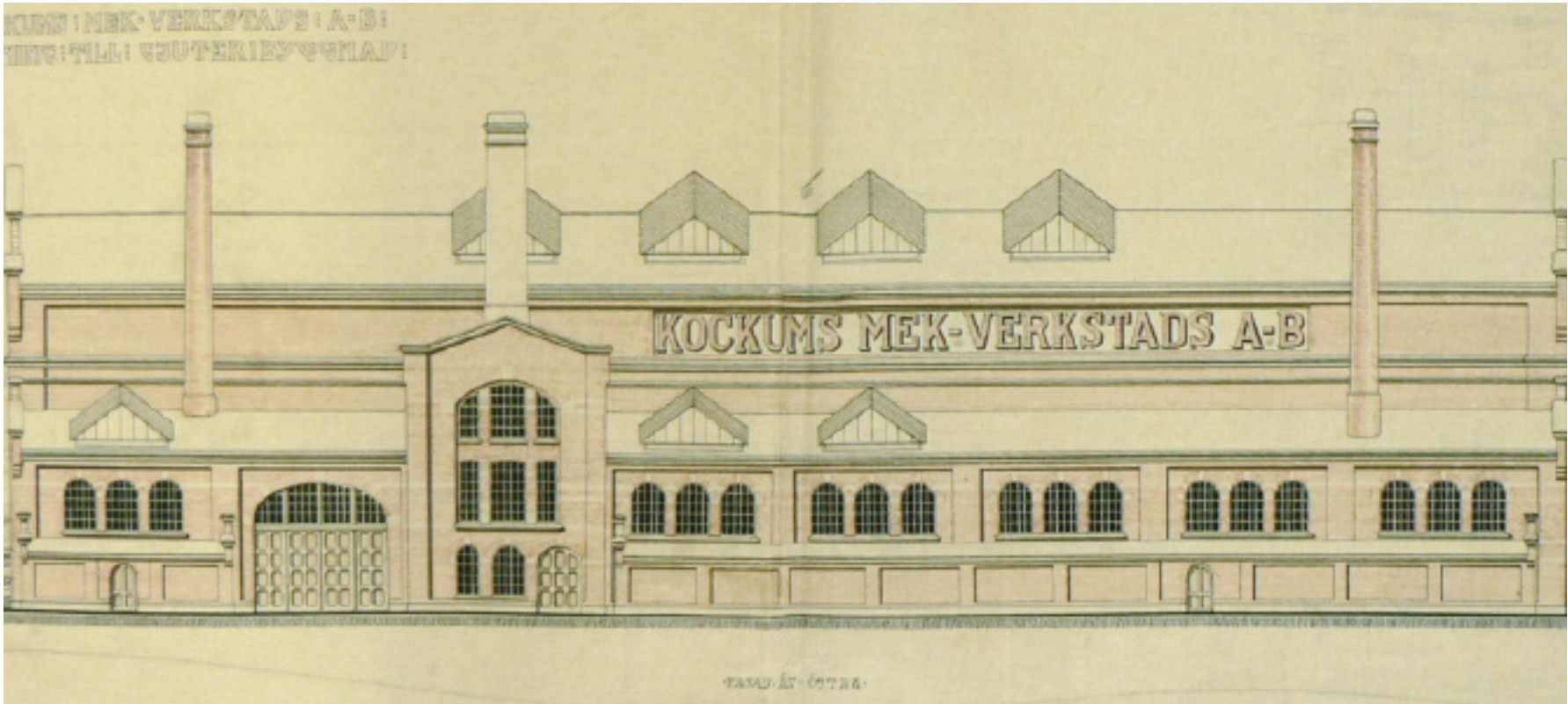
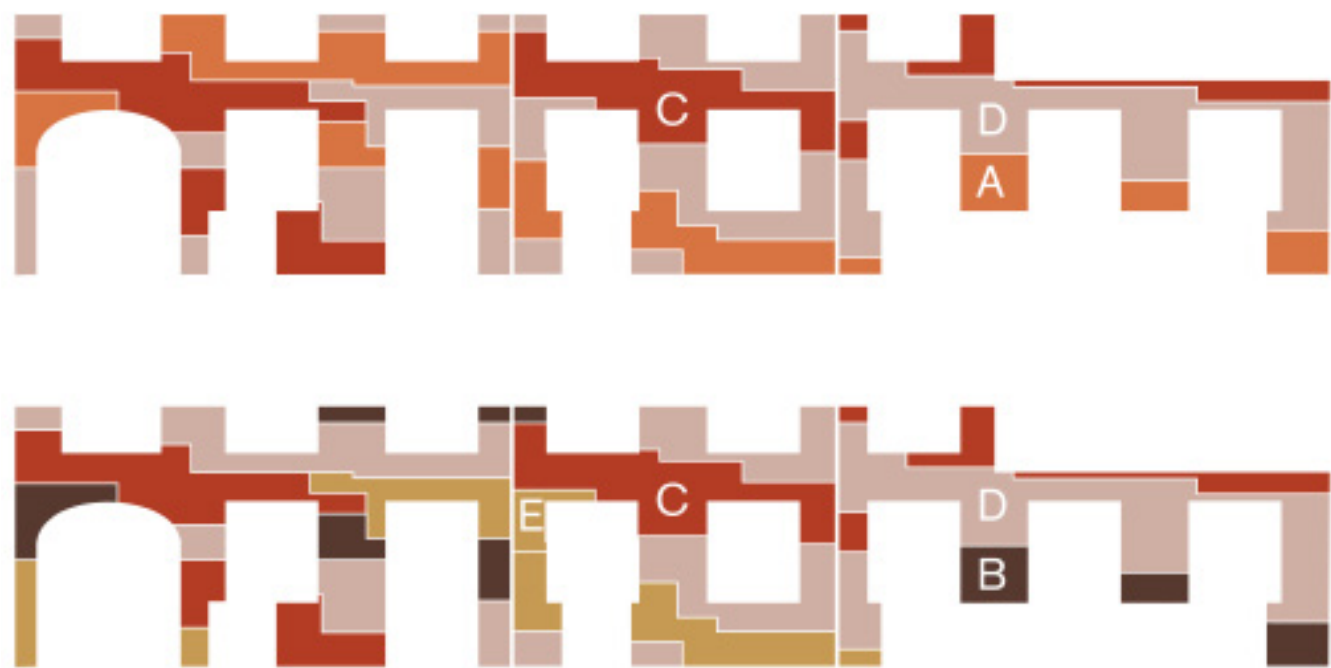
29



30



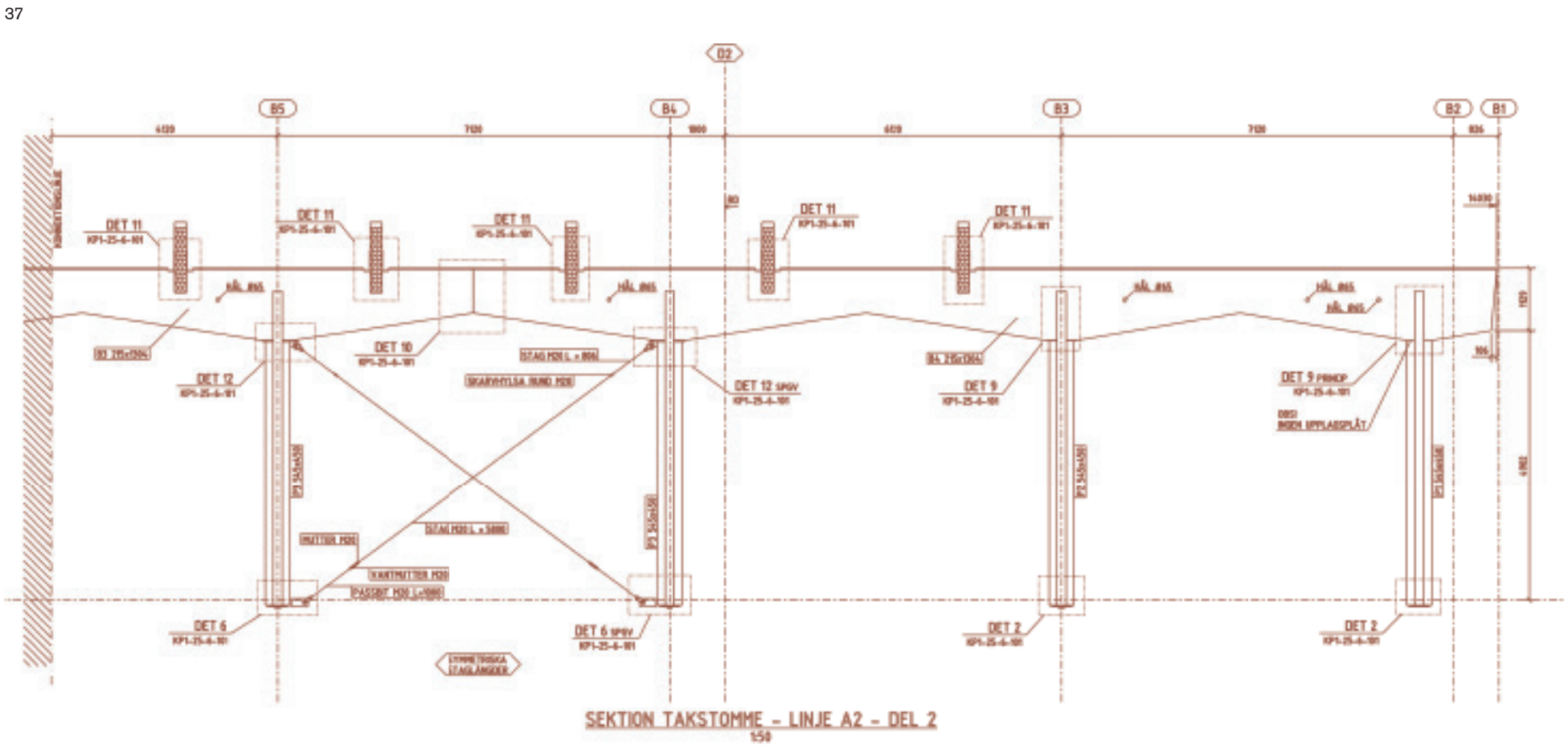
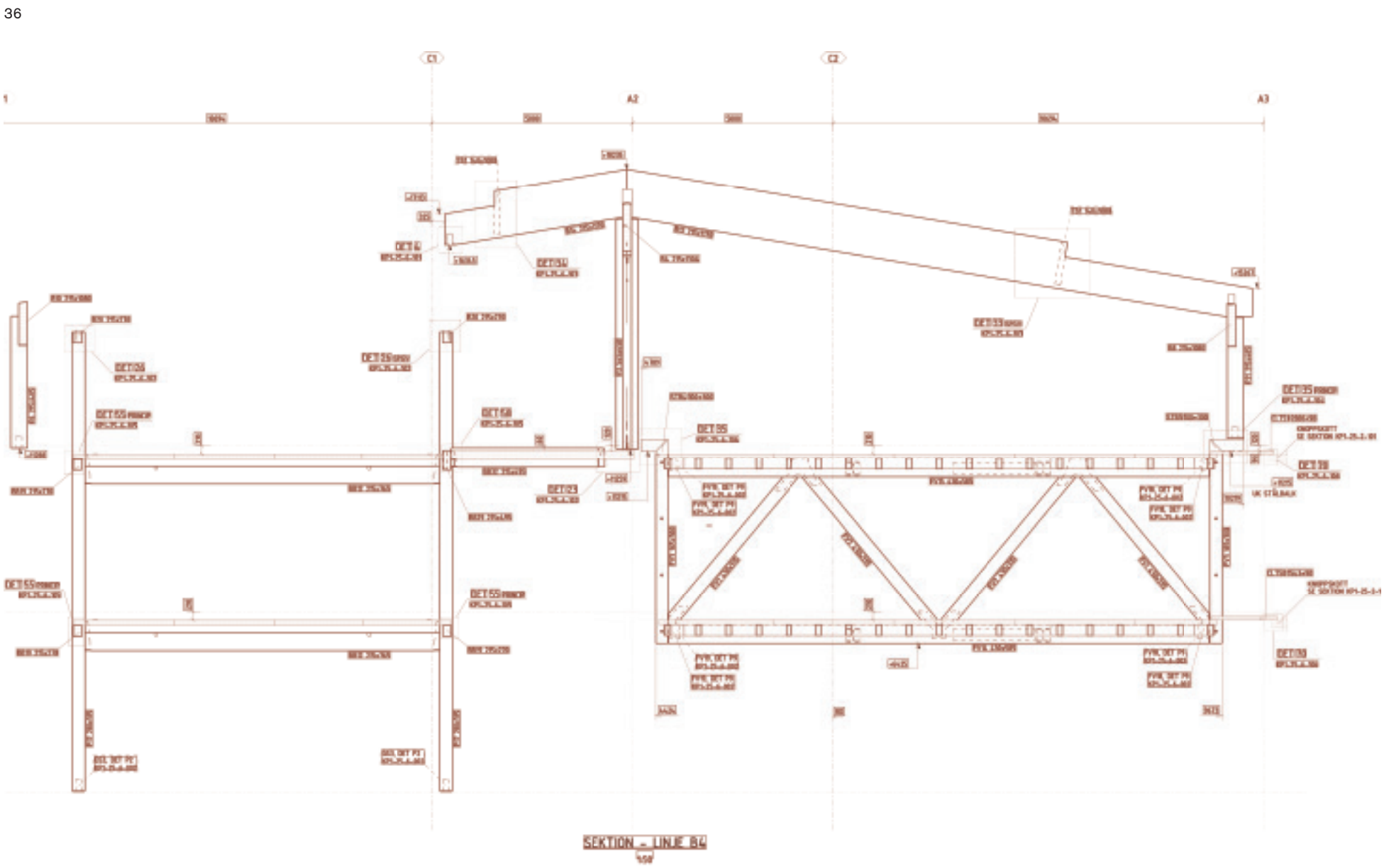








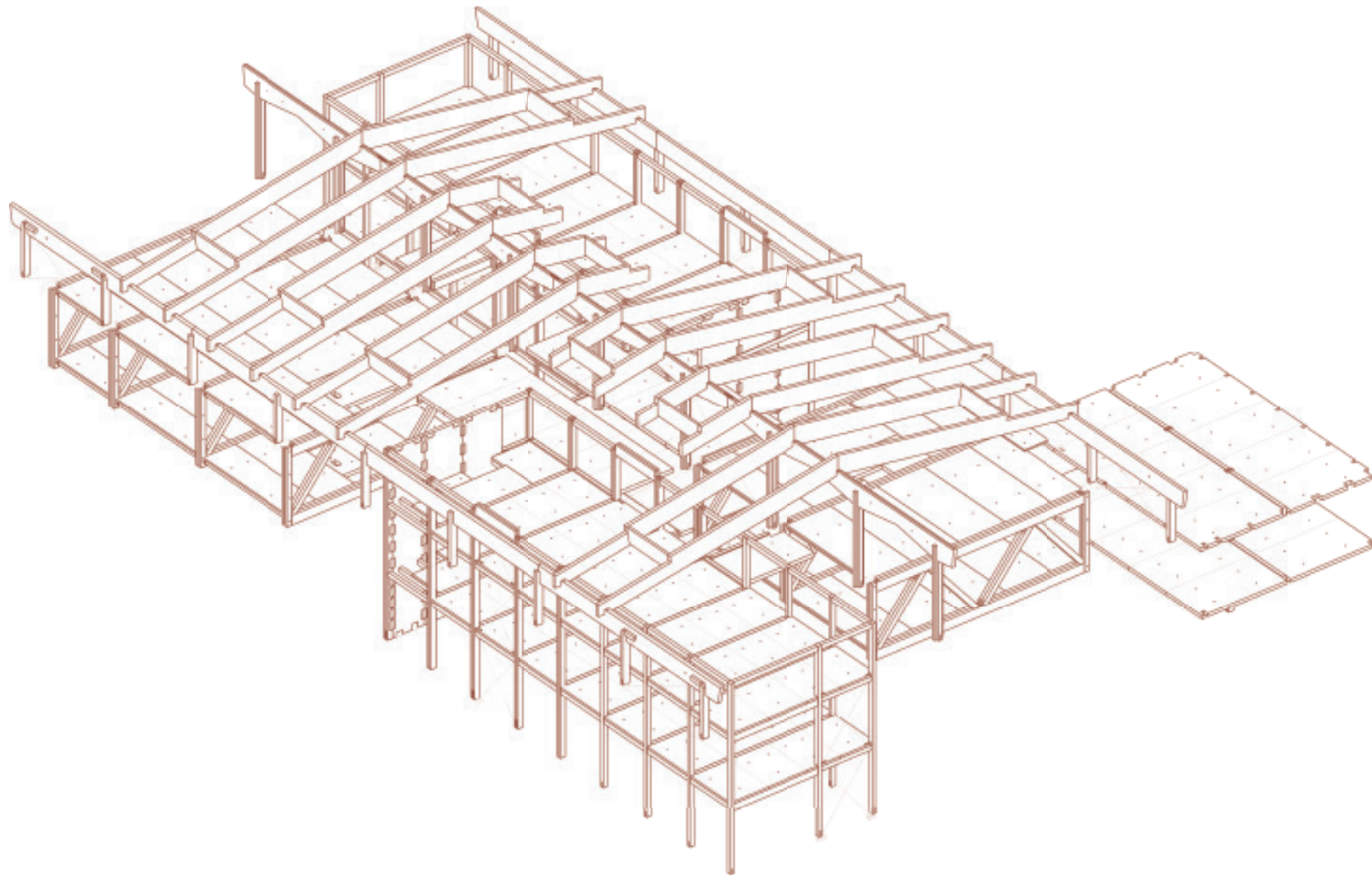






‘Spatial significance and rational structure.’

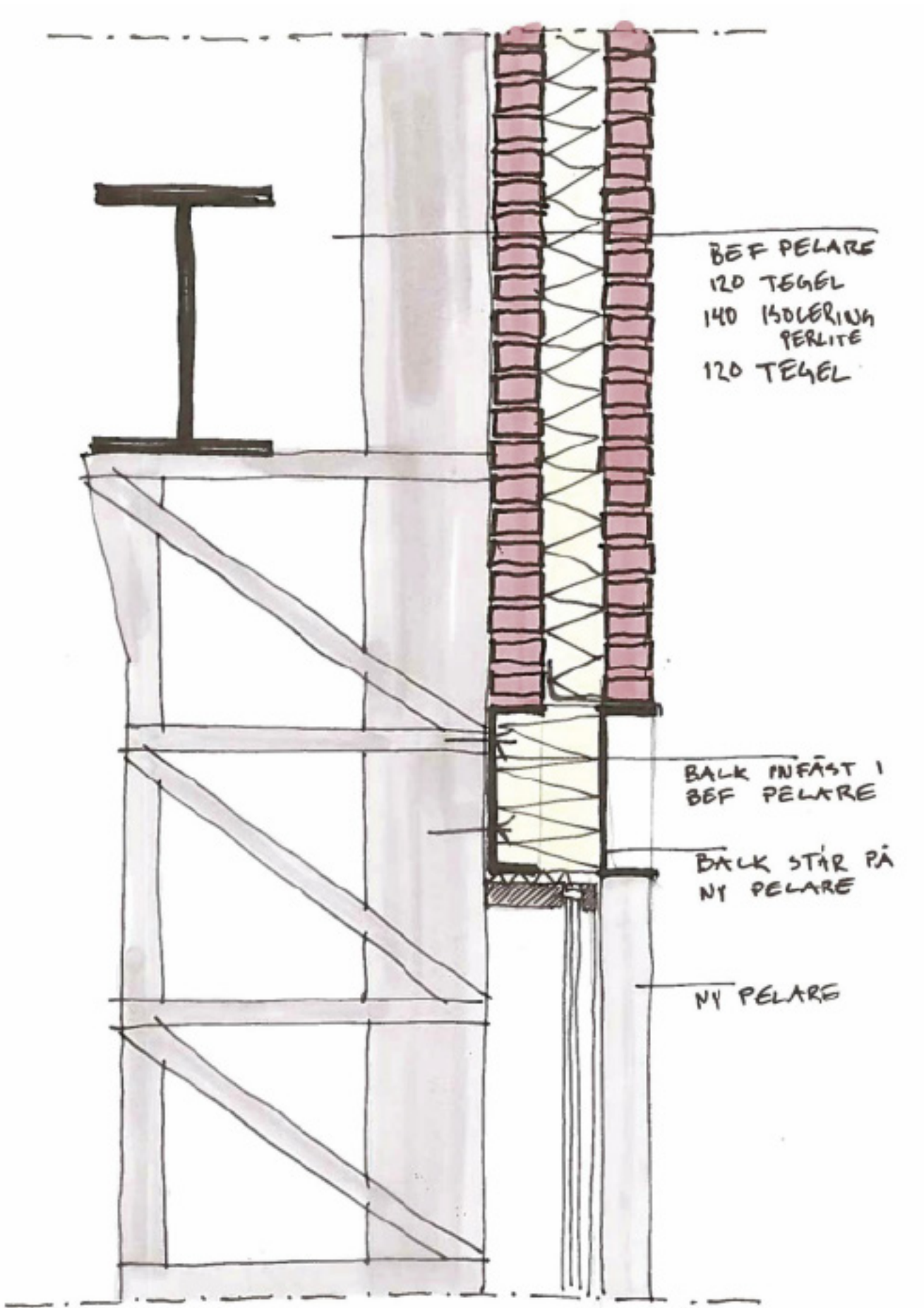
38



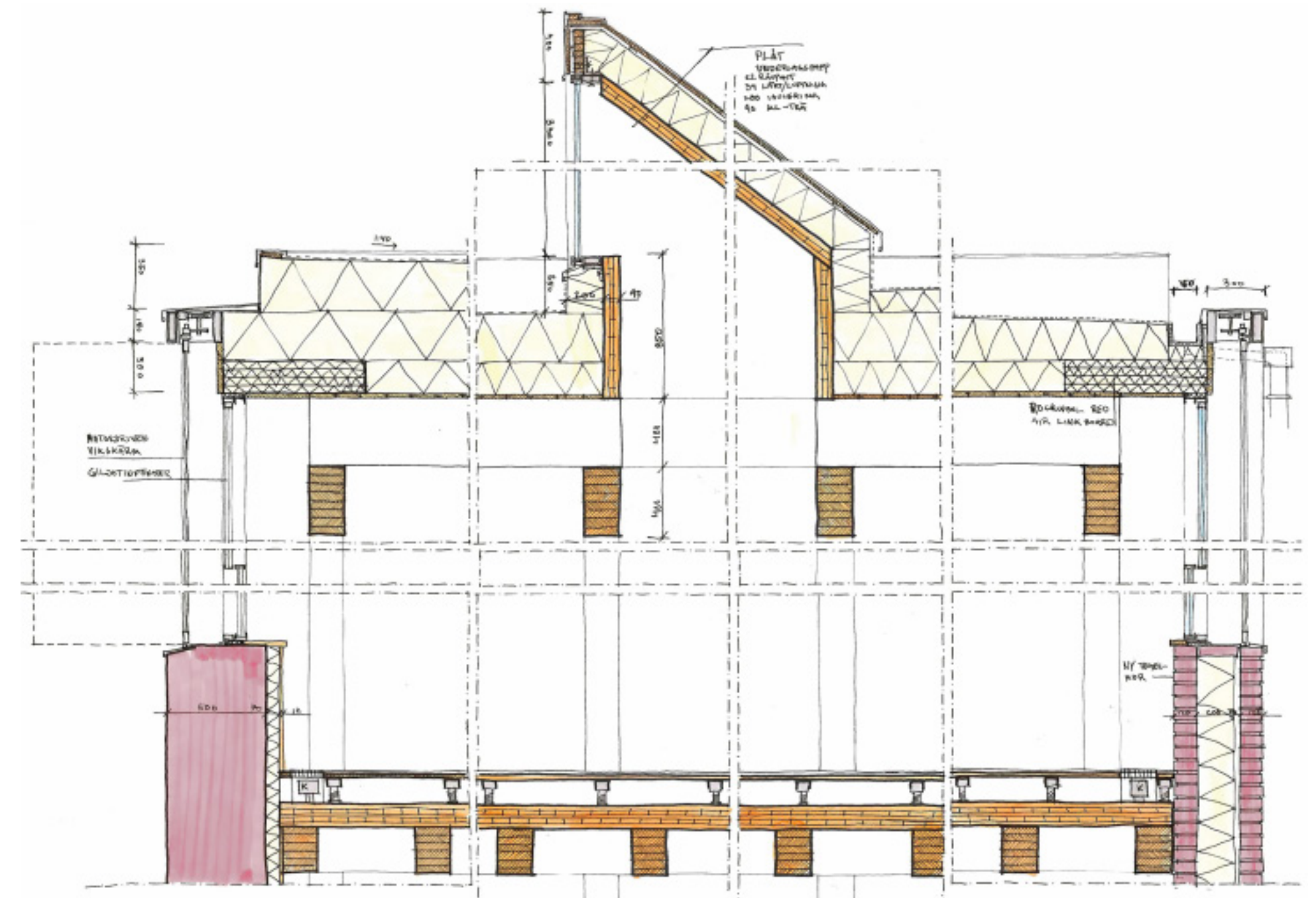
39



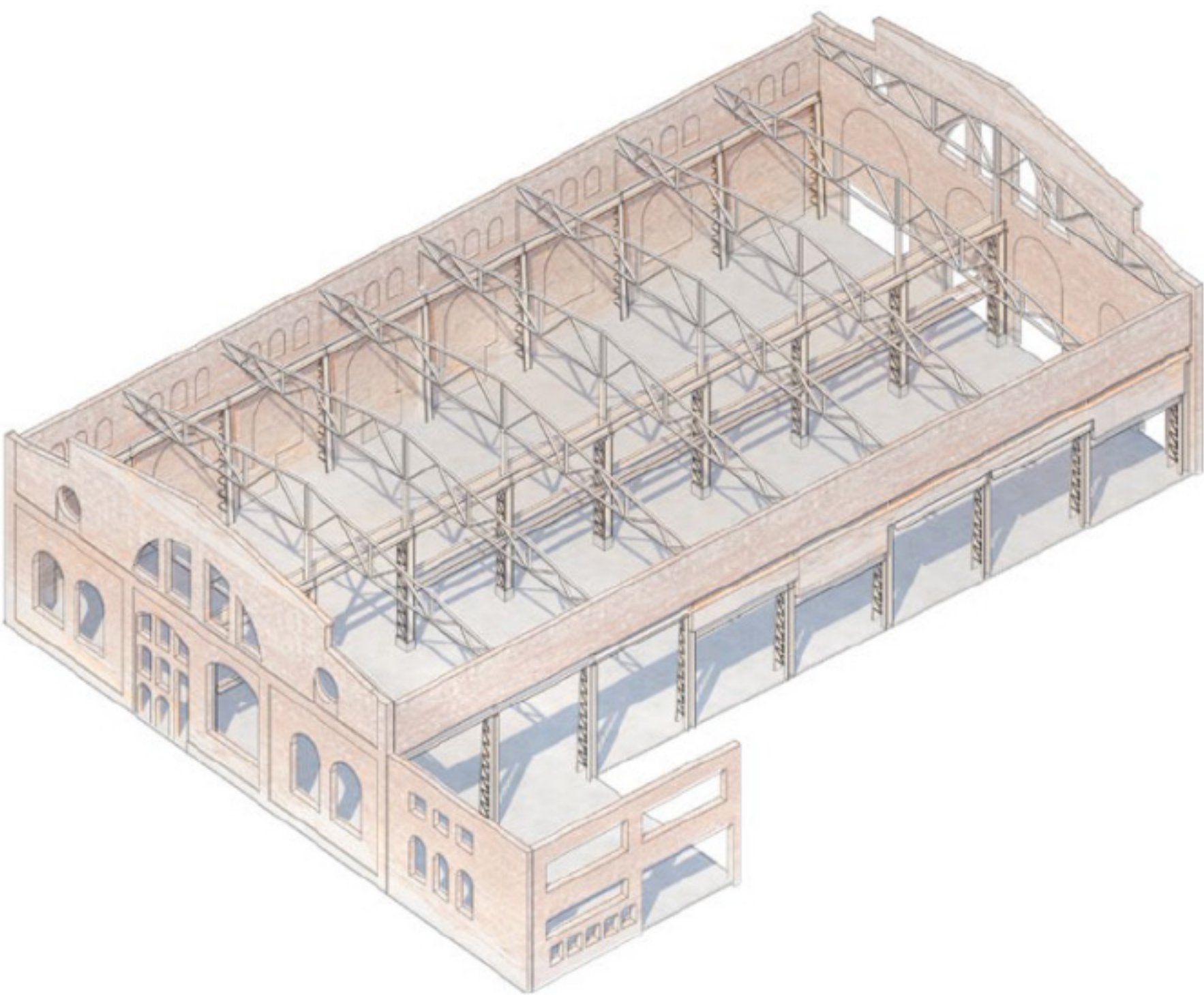














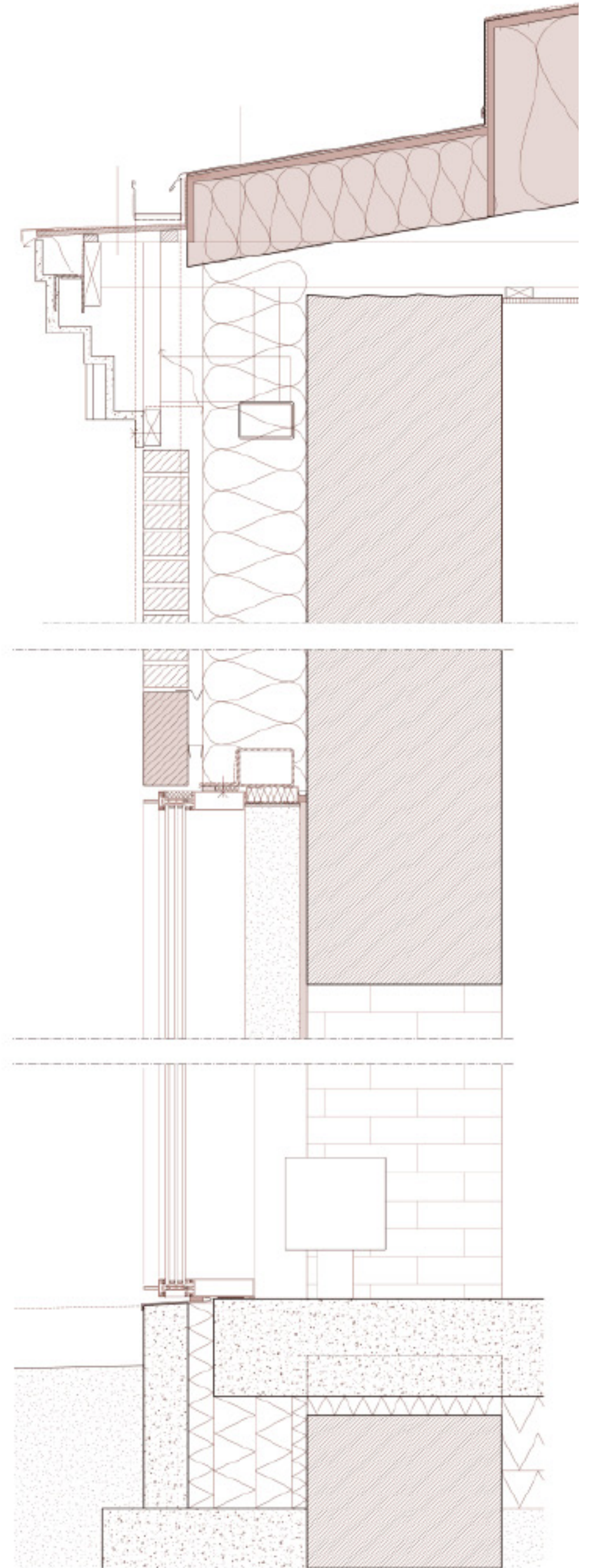
48



49



50









52



53

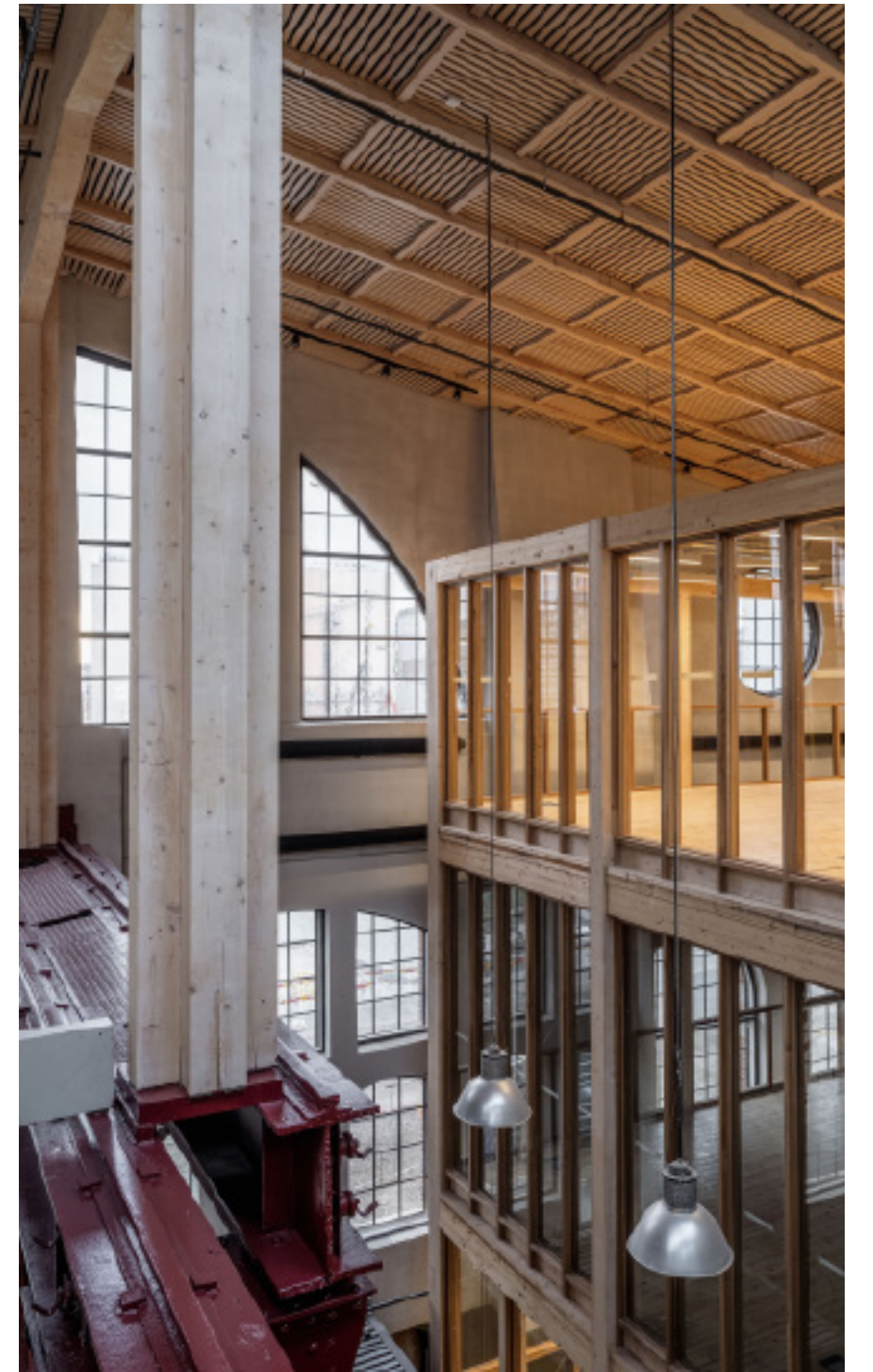


54



‘Open, informal, healthy, light and genuine.’

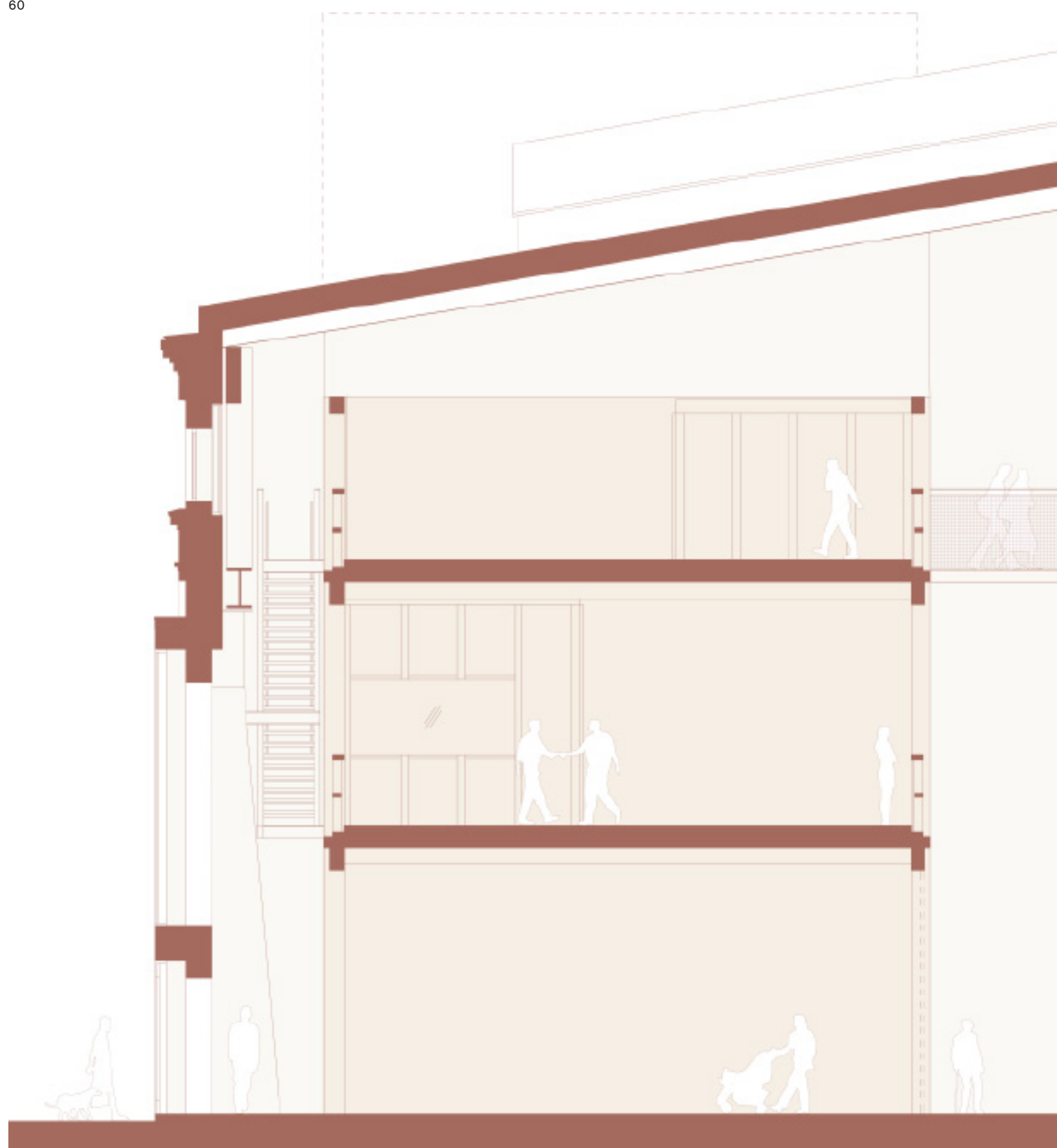




























‘From industrial heritage to a human meeting place.’









01	Original dilapidated state, exposed ruin Photography: ©Petra Bindel, Varvsstaden	11	Gjuteriet, view from Bassängkajen Photography: ©Kjellander Sjöberg	21	Interior view, openness between floors CGI © Engram	31	West façade, patchwork diagram © Kjellander Sjöberg	41	Detail drawing, outer wall with brick meeting large- format glazing © Kjellander Sjöberg	51	Main stairs interconnecting the new diverse interior spaces Photography: ©Rasmus Hjortshej – COAST	61	Gap between existing façade and added timber volumes Photography: ©Rasmus Hjortshej – COAST
02	Site location plan, wider context © Kjellander Sjöberg	12	Interior view, open social meeting place CGI: © Engram	22	Material library © Varvsstaden	32	West façade, original drawing, 1910 Archive ©Axel Stenberg	42	Construction image, suspended spatial timber element Photography: ©Kjellander Sjöberg	52	Close-up, meeting of a steel column and suspended timber element Photography: ©Rasmus Hjortshej – COAST	62	Main entrance space Photography: ©Rasmus Hjortshej – COAST
03	Original dilapidated state, ruin with collapsed roof Photography: ©Petra Bindel	13	Hand sketches, floor plans © Kjellander Sjöberg	23	Material library, recovered components and materials ready for reuse © Varvstaden	33	East façade, proposal New © Kjellander Sjöberg	43	Detail drawing, roof addition © Kjellander Sjöberg	53	Close-up, meeting of metal cladding and timber beam Photography: ©Rasmus Hjortshej – COAST	63	View of the generous interior space Photography: ©Rasmus Hjortshej – COAST
04	Site plan © Kjellander Sjöberg	14	Interior view, open social meeting place CGI © Engram	24	South façade, historic drawing, 1910 ©Axel Stenberg	34	Construction image, installation of suspended timber elements Photography: ©Kjellander Sjöberg	44	Construction image, existing steel columns and beams repainted Photography: ©Kjellander Sjöberg	54	Visual connection across suspended timber elements Photography: ©Rasmus Hjortshej – COAST	64	Characteristic basilica gable Photography: ©Rasmus Hjortshej – COAST
05	Historic photographs Archive © Malmö Muséer	15	Ground floor plan © Kjellander Sjöberg	25	South façade, original dilapidated state © Kjellander Sjöberg	35	Construction image, new timber structure detached from the outer wall Photography: ©Kjellander Sjöberg	45	Construction image, east façade, suspended brick screens Photography: ©Kjellander Sjöberg	55	Vertical connection, steel stairs Photography: ©Rasmus Hjortshej – COAST	65	West façade with oversized new openings Photography: ©Rasmus Hjortshej – COAST
06	Original dilapidated state, ruin with collapsed roof Photography: ©Petra Bindel	16	First floor plan © Kjellander Sjöberg	26	South façade, proposal © Kjellander Sjöberg	36	Detail drawing, timber frame © Tyréns	46	Axonometry, overview © Kjellander Sjöberg	56	Close-up, bolted joint steel beam Photography: ©Rasmus Hjortshej – COAST	66	West façade, exterior close-up Photography: ©Rasmus Hjortshej – COAST
07	Original dilapidated state, ruin with collapsed roof Photography: ©Kjellander Sjöberg	17	Concept diagram, existing envelope, steel structure and added spatial elements © Kjellander Sjöberg	27	Original dilapidated state, exposed ruin Photography: © Kjellander Sjöberg	37	Detail drawing, roof structure © Tyréns	47	Construction image, overview Photography: ©Petra Bindel	57	Interior view of the central atrium and the new stacked spaces Photography: ©Rasmus Hjortshej – COAST	67	Main façade in harmony with the context Photography: ©Rasmus Hjortshej – COAST
08	3D laser scan, Cross section ©Exact	18	Axonometry, spatial significance and rational structure © Kjellander Sjöberg	28	West façade - fragmented collage of historic additions © Kjellander Sjöberg	38	Axonometry, structural timber frame © Tyréns	48	Construction image, dialogue between old and new Photography: ©Kjellander Sjöberg	58	Existing brick façade in dialogue with new stair Photography: ©Rasmus Hjortshej – COAST	68	Corner view capturing the renovated basilica gable and the new west façade Photography: ©Rasmus Hjortshej – COAST
09	3D laser scan, North façade ©Exact	19	Axonometry, variety of spaces with unexpected spatial experiences © Kjellander Sjöberg	29	West façade, proposal © Kjellander Sjöberg	39	Construction image, top floor and installation of ceiling Photography: ©Kjellander Sjöberg	49	Construction image, suspended timber element Photography: ©Kjellander Sjöberg	59	New stair Photography: ©Rasmus Hjortshej – COAST	69	Southern gable, close-up Photography: ©Rasmus Hjortshej – COAST
10	3D laser scan Longitudinal section ©Exact	20	Longitudinal section © Kjellander Sjöberg	30	West façade, hand sketch © Kjellander Sjöberg	40	Original dilapidated state of the west façade Photography: ©Kjellander Sjöberg	50	Detail drawing, west façade © Kjellander Sjöberg	60	Cross section, close-up © Kjellander Sjöberg	70	Southern gable Photography: Rasmus Hjortshej – COAST



Formerly a ruin, the distinctive building has been given a vibrant new life as an active and social new urban place telling a multifaceted story about the port’s rich maritime heritage.



